



MANUAIS  
DE  
SERVIÇO

VOLUME 1

[WWW.ROBOT.HPG.COM.BR](http://WWW.ROBOT.HPG.COM.BR)

[ROBOT@IEG.COM.BR](mailto:ROBOT@IEG.COM.BR)



# NSX-T96

LH

# SERVICE MANUAL

---

COMPACT DISC  
STEREO CASSETTE RECEIVER

BASIC TAPE MECHANISM :2ZM-3MK2 YPR4NM  
BASIC CD MECHANISM : 6ZG-1 YZRNDM

---

- Replace this Service manual with "Revision Publishing" when it is issued.

**aiwa**

S/M Code No. 09-005-426-5T3

SIMPLE

DATA

# ELECTRICAL MAIN PARTS LIST - 1/8

NOTE: The characters in the suffix column indicate the part usage.

REF.NO	PARTS NO.	DESCRIPTION	SUFFIX	
LHSK2M	.....XX.....		B.....	
		KANRI		
		NO.		
C	603	87-010-112-040	CAP,E 100-16	A.....
C	602	87-010-186-080	CAP,CHIP 4700P	A.....
C	601	87-010-196-080	CHIP CAPACITOR,0.1-25	A.....
C	606	87-010-320-080	CHIP CAP 68P	A.....
C	604	87-010-405-040	CAP,E 10-50	A.....
C	605	87-010-546-040	CAP,E 0.33-50	A.....
C	608	87-012-157-080	C-CAP,S 330P-50 CH	A.....
C	621	87-010-178-080	CHIP CAP 1000P	A.....
CN	602	87-A60-082-010	CONN,05P H 9604S-05F	A.....
J	601	87-A61-242-010	JACK,6.3 BLK MONO W/SW V KM	A.....
J	602	87-A61-242-010	JACK,6.3 BLK MONO W/SW V KM	A.....
L	601	87-003-216-080	F-BEAD,BLO1RM1	A.....
Q	604	87-A30-075-080	C-TR,2SA1235F	A.....
Q	602	87-A30-076-080	C-TR,2SC3052F	A.....
Q	603	87-A30-076-080	C-TR,2SC3052F	A.....
Q	601	87-A30-087-080	C-FET,2SK2158	A.....
C	161	87-010-178-080	CHIP CAP 1000P	A.....
C	162	87-012-156-080	C-CAP,S 220P-50 CH	A.....
C	401	87-010-196-080	CHIP CAPACITOR,0.1-25	A.....
C	407	87-010-322-080	C-CAP,S 100P-50 CH	A.....
C	410	87-010-196-080	CHIP CAPACITOR,0.1-25	A.....
C	417	87-010-322-080	C-CAP,S 100P-50 CH	A.....
C	424	87-010-196-080	CHIP CAPACITOR,0.1-25	A.....
C	423	87-010-196-080	CHIP CAPACITOR,0.1-25	A.....
C	501	87-010-178-080	CHIP CAP 1000P	A.....
C	502	87-012-156-080	C-CAP,S 220P-50 CH	A.....
C	531	87-010-196-080	CHIP CAPACITOR,0.1-25	A.....
C	532	87-010-196-080	CHIP CAPACITOR,0.1-25	A.....
CN	104	87-099-750-010	CONN,15P V 9604SC	A.....
CN	302	87-A60-059-010	CONN,08P V 9604S-08C	A.....
IC	401	87-070-289-040	IC,BU 2092F	A.....
IC	402	87-A21-021-040	C-IC,BU2099FV	A.....
LED	101	87-A40-317-080	LED,SLR-342VCT31 RED	A.....
LED	422	87-A40-831-010	LED,SELU1E10CXM-LF70 BLUE-DEF	A.....
LED	421	87-A40-831-010	LED,SELU1E10CXM-LF70 BLUE-DEF	A.....
LED	445	87-A40-380-180	LED,SEL6510C-TP5 GRN	A.....
LED	446	87-A40-380-180	LED,SEL6510C-TP5 GRN	A.....
LED	441	87-A40-380-180	LED,SEL6510C-TP5 GRN	A.....
LED	447	87-A40-380-180	LED,SEL6510C-TP5 GRN	A.....
LED	443	87-A40-380-180	LED,SEL6510C-TP5 GRN	A.....
LED	448	87-A40-380-180	LED,SEL6510C-TP5 GRN	A.....
LED	440	87-A40-380-180	LED,SEL6510C-TP5 GRN	A.....
LED	444	87-A40-380-180	LED,SEL6510C-TP5 GRN	A.....
LED	442	87-A40-380-180	LED,SEL6510C-TP5 GRN	A.....
LED	449	87-A40-380-180	LED,SEL6510C-TP5 GRN	A.....
LED	455	87-A40-809-040	LED,LTL-307KK PGRN	A.....
LED	451	87-A40-809-040	LED,LTL-307KK PGRN	A.....
LED	452	87-A40-809-040	LED,LTL-307KK PGRN	A.....
LED	454	87-A40-809-040	LED,LTL-307KK PGRN	A.....
LED	453	87-A40-809-040	LED,LTL-307KK PGRN	A.....
LED	456	87-A40-809-040	LED,LTL-307KK PGRN	A.....
LED	463	87-A40-317-080	LED,SLR-342VCT31 RED	A.....
LED	464	87-A40-317-080	LED,SLR-342VCT31 RED	A.....
LED	461	87-A40-317-080	LED,SLR-342VCT31 RED	A.....
LED	462	87-A40-317-080	LED,SLR-342VCT31 RED	A.....
LED	465	87-A40-317-080	LED,SLR-342VCT31 RED	A.....
LED	521	87-A40-678-010	LED,SELU1E10CXM BLUE-DEF	A.....
LED	522	87-A40-678-010	LED,SELU1E10CXM BLUE-DEF	A.....
Q	109	87-A30-087-080	C-FET,2SK2158	A.....
Q	401	87-A30-075-080	C-TR,2SA1235F	A.....
S	252	87-A90-095-080	SW,TACT EVQ11G04M	A.....
SW	101	87-A91-740-010	SW,RTRY EC12E24308-30MM	A.....
SW	501	87-A91-739-010	SW,RTRY EC12E12404-25MM RT	A.....
C	1	87-010-387-080	CAP,E 470-25 SME	A.....
C	6	87-010-917-000	CAP,E 3300-50 M SMG	A.....
C	7	87-010-917-000	CAP,E 3300-50 M SMG	A.....
C	16	87-010-403-040	CAP,E 3.3-50 SME	A.....
C	22	87-A10-231-090	CAP,E 3300-80	A.....
C	23	87-A10-231-090	CAP,E 3300-80	A.....
C	37	87-A11-148-080	CAP,TC U 0.1-50 Z F	A.....
C	38	87-A11-148-080	CAP,TC U 0.1-50 Z F	A.....
CN	2	87-A61-108-010	CONN,5P V TID-A	A.....
CN	1	87-A61-110-010	CONN,9P V TID-A	A.....
D	2	87-017-447-010	DIODE,GBU4DL	A.....
D	3	87-017-654-060	DIODE,GBU6J	A.....
D	8	87-020-465-080	DIODE,1SS133 (110MA)	A.....
D	4	87-020-465-080	DIODE,1SS133 (110MA)	A.....
D	5	87-020-465-080	DIODE,1SS133 (110MA)	A.....
D	7	87-020-465-080	DIODE,1SS133 (110MA)	A.....
D	6	87-020-465-080	DIODE,1SS133 (110MA)	A.....
D	9	87-020-465-080	DIODE,1SS133 (110MA)	A.....

ELECTRICAL MAIN PARTS LIST - 2/8

FC	3	87-033-213-080	CLAMP, FUSE	A
FC	4	87-033-213-080	CLAMP, FUSE	A
PR	8	87-026-682-080	PROTECTOR,10A 60V491	A
PR	5	87-026-682-080	PROTECTOR,10A 60V491	A
PR	6	87-A90-195-080	PROTECTOR 7A 125V 49	A
PR	5	87-A90-195-080	PROTECTOR 7A 125V 49	A
PT	2	8A-NF8-662-010	PT,SUB ANF-8 (E)	A
Q	1	87-026-245-080	TR,DTC114ES	A
Q	2	87-A30-198-080	TR,KTC3199GR	A
RY	1	87-A90-976-010	RELAY,AC12V SDT-S-112LMR	A
T	2	87-A60-317-010	TERMINAL, 1P MSC	A
T	1	87-A60-317-010	TERMINAL, 1P MSC	A
C	101	87-010-188-080	CAP,CHIP 6800P	A
C	102	87-010-188-080	CAP,CHIP 6800P	A
C	107	87-010-404-080	CAP, ELECT 4.7-50V	A
C	108	87-010-404-080	CAP, ELECT 4.7-50V	A
C	103	87-010-405-080	CAP, ELECT 10-50V	A
C	104	87-010-405-080	CAP, ELECT 10-50V	A
C	119	87-010-197-080	CAP, CHIP 0.01 DM	A
C	112	87-010-322-080	C-CAP,S 100P-50 CH	A
C	111	87-010-322-080	C-CAP,S 100P-50 CH	A
C	114	87-A10-812-080	C-CAP,S 220P-200 J CH	A
C	113	87-A10-812-080	C-CAP,S 220P-200 J CH	A
C	120	87-010-197-080	CAP, CHIP 0.01 DM	A
C	121	87-010-260-080	CAP, ELECT 47-25V	A
C	122	87-010-260-080	CAP, ELECT 47-25V	A
C	174	87-010-186-080	CAP,CHIP 4700P	A
C	173	87-010-186-080	CAP,CHIP 4700P	A
C	209	87-010-184-080	CHIP CAPACITOR 3300P(K)	A
C	205	87-010-187-080	CAP CHIP S5600P	A
C	206	87-010-187-080	CAP CHIP S5600P	A
C	207	87-010-403-080	CAP, ELECT 3.3-50V	A
C	208	87-010-403-080	CAP, ELECT 3.3-50V	A
C	210	87-010-184-080	CHIP CAPACITOR 3300P(K)	A
C	218	87-010-260-080	CAP, ELECT 47-25V	A
C	217	87-010-260-080	CAP, ELECT 47-25V	A
C	212	87-010-401-080	CAP, ELECT 1-50V	A
C	211	87-010-401-080	CAP, ELECT 1-50V	A
C	216	87-012-156-080	C-CAP,S 220P-50 CH	A
C	215	87-012-156-080	C-CAP,S 220P-50 CH	A
C	223	87-010-197-080	CAP, CHIP 0.01 DM	A
C	224	87-010-197-080	CAP, CHIP 0.01 DM	A
C	221	87-016-100-080	CAP,E 10-50 BP	A
C	222	87-016-100-080	CAP,E 10-50 BP	A
C	249	87-012-368-080	C-CAP,S 0.1-50 F	A
C	256	87-010-190-080	S CHIP F 0.01	A
C	255	87-010-190-080	S CHIP F 0.01	A
C	252	87-010-196-080	CHIP CAPACITOR,0.1-25	A
C	253	87-010-196-080	CHIP CAPACITOR,0.1-25	A
C	254	87-010-993-080	C-CAP,S 0.056-25 B	A
C	251	87-010-993-080	C-CAP,S 0.056-25 B	A
C	402	87-010-196-080	CHIP CAPACITOR,0.1-25	A
C	414	87-A10-119-080	CAP,E 10-100 REA	A
C	413	87-A10-119-080	CAP,E 10-100 REA	A
CNA	101	8A-NF8-652-010	CONN ASSY,7P TID-A(480)	A
CNA	103	8A-NF8-656-010	CONN ASSY,5P TID-A 400	A
CON	101	87-A61-011-010	CONN,13P H BLK TAC-L13P-A3	A
CON	102	87-A61-011-010	CONN,13P H BLK TAC-L13P-A3	A
D	101	87-A40-269-080	C-DIODE,MC2836	A
D	103	87-A40-313-080	C-DIODE,MC 2840	A
D	113	87-020-331-080	CHIP-DIODE,DAN202K	A
D	117	87-A40-488-080	DIODE,1SS244	A
D	118	87-A40-488-080	DIODE,1SS244	A
D	171	87-A40-270-080	C-DIODE,MC2838	A
D	202	87-020-331-080	CHIP-DIODE,DAN202K	A
D	204	87-020-465-080	DIODE,1SS133 (110MA)	A
D	201	87-A40-269-080	C-DIODE,MC2836	A
D	205	87-A40-270-080	C-DIODE,MC2838	A
D	203	87-A40-313-080	C-DIODE,MC 2840	A
D	412	87-020-465-080	DIODE,1SS133 (110MA)	A
D	414	87-020-465-080	DIODE,1SS133 (110MA)	A
D	411	87-020-465-080	DIODE,1SS133 (110MA)	A
D	410	87-020-465-080	DIODE,1SS133 (110MA)	A
D	413	87-020-465-080	DIODE,1SS133 (110MA)	A
D	419	87-A40-747-080	ZENER,UZ5.1BSB	A
D	418	87-A40-751-080	ZENER,UZ6.2BSB	A
D	417	87-A40-764-080	ZENER,UZ10BSC	A
D	421	87-A40-646-010	DIODE,FMB-G16L	A
D	422	87-A40-646-010	DIODE,FMB-G16L	A
D	428	87-A40-764-080	ZENER,UZ10BSC	A
D	431	87-020-465-080	DIODE,1SS133 (110MA)	A
IC	201	87-A21-398-010	IC,STK490-110	A
J	201	87-A61-148-010	JACK,PIN 4P R/W BLUE	A
JW	944	87-A90-896-080	F-BEAD, 035600STY7	A
L	251	87-A50-610-010	COIL,1UH K(MDEC)	A
L	252	87-A50-610-010	COIL,1UH K(MDEC)	A
Q	113	87-A30-076-080	C-TR,2SC3052F	A

ELECTRICAL MAIN PARTS LIST - 3/8

Q	115	87-A30-076-080	C-TR, 2SC3052F	A
Q	116	87-A30-076-080	C-TR, 2SC3052F	A
Q	114	87-A30-076-080	C-TR, 2SC3052F	A
Q	112	87-A30-107-070	C-TR, CMBT5401	A
Q	111	87-A30-107-070	C-TR, CMBT5401	A
Q	117	87-A30-107-070	C-TR, CMBT5401	A
Q	118	87-A30-107-070	C-TR, CMBT5401	A
Q	119	87-A30-190-080	TR, CC5551	A
Q	120	87-A30-190-080	TR, CC5551	A
Q	131	87-A30-097-010	TR, FN 1016	A
Q	132	87-A30-097-010	TR, FN 1016	A
Q	133	87-A30-098-010	TR, FP 1016	A
Q	134	87-A30-098-010	TR, FP 1016	A
Q	135	87-A30-107-070	C-TR, CMBT5401	A
Q	136	87-A30-107-070	C-TR, CMBT5401	A
Q	172	87-A30-106-040	C-TR, CMBT5551	A
Q	171	87-A30-107-070	C-TR, CMBT5401	A
Q	203	87-A30-075-080	C-TR, 2SA1235F	A
Q	202	87-A30-107-070	C-TR, CMBT5401	A
Q	201	87-A30-107-070	C-TR, CMBT5401	A
Q	409	87-A30-076-080	C-TR, 2SC3052F	A
Q	402	87-A30-107-070	C-TR, CMBT5401	A
Q	406	87-A30-186-010	FET, 2SK3053	A
Q	405	87-A30-186-010	FET, 2SK3053	A
Q	401	87-A30-484-080	C-TR, KRA102S	A
Q	403	87-A30-484-080	C-TR, KRA102S	A
Q	410	87-A30-075-080	C-TR, 2SA1235F	A
R	165	87-A00-418-010	RES, M/F 0.15-3W J	A
R	162	87-A00-418-010	RES, M/F 0.15-3W J	A
R	161	87-A00-418-010	RES, M/F 0.15-3W J	A
R	166	87-A00-418-010	RES, M/F 0.15-3W J	A
R	232	87-A00-258-080	RES, M/F 0.22-1W J	A
R	231	87-A00-258-080	RES, M/F 0.22-1W J	A
R	243	87-A00-258-080	RES, M/F 0.22-1W J	A
R	244	87-A00-258-080	RES, M/F 0.22-1W J	A
TH	102	87-A91-042-080	C-THMS, 100K 55001	A
TH	101	87-A91-042-080	C-THMS, 100K 55001	A
WH	103	87-A90-459-010	HLDR, WIRE 2.5-5P	A
WH	101	87-A90-460-010	HLDR, WIRE 2.5-7P	A
*		8Z-NF3-210-010	GUIDE, FL	A
C	103	87-010-196-080	CHIP CAPACITOR, 0.1-25	A
C	104	87-010-313-080	CAP, CHIP 18P	A
C	105	87-010-322-080	C-CAP, S 100P-50 CH	A
C	109	87-010-401-040	CAP, E 1-50 SME	A
C	106	87-012-145-080	CAP, CHIP S 270P CH	A
C	107	87-012-157-080	C-CAP, S 330P-50 CH	A
C	108	87-015-681-040	E/CAP 10-16	A
C	118	87-010-194-080	CAP, CHIP 0.047	A
C	115	87-010-198-080	CAP, CHIP 0.022	A
C	116	87-010-493-040	CAP, E 0.47-50 GAS	A
C	117	87-010-498-040	CAP, E 10-16 GAS	A
C	112	87-016-460-080	C-CAP, S 0.22-16 B	A
C	119	87-A10-797-040	CAP, E 47-35 M 5L SRM	A
C	128	87-010-178-080	CHIP CAP 1000P	A
C	129	87-010-194-080	CAP, CHIP 0.047	A
C	122	87-010-197-080	CAP, CHIP 0.01 DM	A
C	120	87-015-699-040	CAP, E 10-50 7L	A
C	121	87-015-699-040	CAP, E 10-50 7L	A
C	131	87-A10-189-040	CAP, E 220-10	A
C	132	87-A10-189-040	CAP, E 220-10	A
C	151	87-010-194-080	CAP, CHIP 0.047	A
C	196	87-010-194-080	CAP, CHIP 0.047	A
C	197	87-010-194-080	CAP, CHIP 0.047	A
C	192	87-015-785-080	CHIP CAPACITOR, 0.1FZ-25Z	A
C	301	87-010-318-080	C-CAP, S 47P-50 CH	A
C	303	87-016-460-080	C-CAP, S 0.22-16 B	A
C	304	87-016-460-080	C-CAP, S 0.22-16 B	A
C	310	87-010-067-040	CAP, E 0.1-50 5L	A
C	701	87-010-981-040	CAP, E 22-35 5L SRE	A
C	901	87-012-157-080	C-CAP, S 330P-50 CH	A
C	912	87-010-176-080	C-CAP, S 680P-50 SL	A
C	913	87-010-176-080	C-CAP, S 680P-50 SL	A
CN	101	87-099-720-010	CONN, 30P TYK-B(P)	A
CN	103	87-099-750-010	CONN, 15P V 9604SC	A
CN	102	87-A60-054-010	CONN, 14P V 9604S-14C	A
CN	301	87-A60-079-010	CONN, 08P H 9604S-08F	A
CN	601	87-A60-062-010	CONN, 05P V 9604S-05C	A
CN	701	87-099-750-010	CONN, 15P V 9604SC	A
D	109	87-017-154-080	ZENER, HZS6C3L	A
D	310	87-A40-747-080	ZENER, UZ5.1BSB	A
D	338	87-020-465-080	DIODE, 1SS133 (110MA)	A
D	337	87-020-465-080	DIODE, 1SS133 (110MA)	A
D	701	87-A40-269-080	C-DIODE, MC2836	A
FL	101	8A-NF3-613-010	FL, BJ752GK-ANF3	A
IC	102	87-A21-482-010	IC, RPM6938-H4	A
IC	101	8A-NF3-635-010	C-IC, LC876580W-****	A
IC	380	87-A21-577-040	C-IC, M61506FP	A

ELECTRICAL MAIN PARTS LIST - 4/8

JR	102	83-XM1-617-080	C-COIL, BK2125HM601	A
L	101	87-A50-333-010	COIL, OSC 9.43MHZ	A
LED	315	87-A40-380-180	LED, SEL6510C-TP5 GRN	A
LED	311	87-A40-380-180	LED, SEL6510C-TP5 GRN	A
LED	312	87-A40-380-180	LED, SEL6510C-TP5 GRN	A
LED	314	87-A40-380-180	LED, SEL6510C-TP5 GRN	A
LED	313	87-A40-380-180	LED, SEL6510C-TP5 GRN	A
Q	104	87-026-610-080	TR, KTC3198GR	A
Q	102	87-A30-076-080	C-TR, 2SC3052F	A
Q	107	87-A30-076-080	C-TR, 2SC3052F	A
Q	101	87-A30-087-080	C-FET, 2SK2158	A
Q	108	87-A30-468-080	C-TR, KRC102S-RTK	A
Q	111	87-A30-074-080	C-TR, RT1P 141C	A
Q	112	87-A30-074-080	C-TR, RT1P 141C	A
Q	301	87-A30-276-040	C-TR, DTA143EKA	A
Q	702	87-A30-318-080	TR, CSA952K	A
Q	703	87-A30-318-080	TR, CSA952K	A
Q	701	87-A30-329-080	TR, CD1585BC	A
S	313	87-A90-095-080	SW, TACT EVQ11G04M	A
S	316	87-A90-095-080	SW, TACT EVQ11G04M	A
S	312	87-A90-095-080	SW, TACT EVQ11G04M	A
S	317	87-A90-095-080	SW, TACT EVQ11G04M	A
S	314	87-A90-095-080	SW, TACT EVQ11G04M	A
S	311	87-A90-095-080	SW, TACT EVQ11G04M	A
S	315	87-A90-095-080	SW, TACT EVQ11G04M	A
C	307	87-010-196-080	CHIP CAPACITOR, 0.1-25	A
C	301	87-010-318-080	C-CAP, S 47P-50 CH	A
C	302	87-010-318-080	C-CAP, S 47P-50 CH	A
C	306	87-012-157-080	C-CAP, S 330P-50 CH	A
C	305	87-012-157-080	C-CAP, S 330P-50 CH	A
C	303	87-012-157-080	C-CAP, S 330P-50 CH	A
C	304	87-012-157-080	C-CAP, S 330P-50 CH	A
C	315	87-010-178-080	CHIP CAP 1000P	A
C	316	87-010-178-080	CHIP CAP 1000P	A
C	313	87-010-180-080	C-CER 1500P	A
C	314	87-010-180-080	C-CER 1500P	A
C	311	87-010-198-080	CAP, CHIP 0.022	A
C	312	87-010-198-080	CAP, CHIP 0.022	A
C	319	87-012-141-080	CHIP-CAPACITOR, 0.22-16F	A
C	317	87-A10-201-080	C-CAP, S0.33-16 KB	A
C	318	87-A10-201-080	C-CAP, S0.33-16 KB	A
C	324	87-010-260-080	CAP, ELECT 47-25V	A
C	325	87-010-370-080	CAP, E 330-6.3 SME	A
C	327	87-010-404-080	CAP, ELECT 4.7-50V	A
C	328	87-010-404-080	CAP, ELECT 4.7-50V	A
C	320	87-012-141-080	CHIP-CAPACITOR, 0.22-16F	A
C	322	87-012-141-080	CHIP-CAPACITOR, 0.22-16F	A
C	321	87-012-141-080	CHIP-CAPACITOR, 0.22-16F	A
C	332	87-010-196-080	CHIP CAPACITOR, 0.1-25	A
C	339	87-010-196-080	CHIP CAPACITOR, 0.1-25	A
C	337	87-010-196-080	CHIP CAPACITOR, 0.1-25	A
C	336	87-010-401-080	CAP, ELECT 1-50V	A
C	335	87-010-401-080	CAP, ELECT 1-50V	A
C	340	87-010-196-080	CHIP CAPACITOR, 0.1-25	A
C	354	87-010-175-080	CAP 560P	A
C	358	87-010-183-080	C-CAP, S 2700P-50 B	A
C	359	87-010-183-080	C-CAP, S 2700P-50 B	A
C	357	87-010-197-080	CAP, CHIP 0.01 DM	A
C	356	87-010-260-080	CAP, ELECT 47-25V	A
C	351	87-012-140-080	CAP 470P	A
C	352	87-012-140-080	CAP 470P	A
C	355	87-012-349-080	C-CAP, S 1000P-50 CH	A
C	360	87-010-183-080	C-CAP, S 2700P-50 B	A
C	372	87-010-175-080	CAP 560P	A
C	371	87-010-175-080	CAP 560P	A
C	374	87-010-179-080	CAP, CHIP S B1200P	A
C	373	87-010-179-080	CAP, CHIP S B1200P	A
C	378	87-010-196-080	CHIP CAPACITOR, 0.1-25	A
C	370	87-010-196-080	CHIP CAPACITOR, 0.1-25	A
C	376	87-010-545-080	CAP, ELECT 0.22-50V	A
C	375	87-010-545-080	CAP, ELECT 0.22-50V	A
C	385	87-010-184-080	CHIP CAPACITOR 3300P(K)	A
C	386	87-010-196-080	CHIP CAPACITOR, 0.1-25	A
C	381	87-010-197-080	CAP, CHIP 0.01 DM	A
C	383	87-010-197-080	CAP, CHIP 0.01 DM	A
C	382	87-010-318-080	C-CAP, S 47P-50 CH	A
C	384	87-010-402-080	CAP, ELECT 2.2-50V	A
C	388	87-012-156-080	C-CAP, S 220P-50 CH	A
CN	301	87-A60-620-010	CONN, 3P V 2MM JMT	A
CN	351	87-A60-625-010	CONN, 8P V 2MM JMT	A
D	353	87-020-465-080	DIODE, 1SS133 (110MA)	A
D	352	87-020-465-080	DIODE, 1SS133 (110MA)	A
FB	301	87-008-372-080	FILTER, EMI BL OIRNI	A
IC	302	87-A20-355-010	IC, CXA1553P	A
IC	303	87-A20-783-040	C-IC, BA7762AFS	A
L	301	87-A50-625-010	COIL, TRAP 85KHZ (SANWA)	A
L	302	87-A50-625-010	COIL, TRAP 85KHZ (SANWA)	A

ELECTRICAL MAIN PARTS LIST - 5/8

L	351	87-007-342-010	COIL,OSC 85K BIAS	A.....
Q	357	87-026-609-080	TR,KTA1266GR	A.....
Q	358	87-026-610-080	TR,KTC3198GR	A.....
Q	359	87-026-610-080	TR,KTC3198GR	A.....
Q	355	87-A30-063-080	C-TR,KRA104S	A.....
Q	356	87-A30-076-080	C-TR,2SC3052F	A.....
Q	353	87-A30-087-080	C-FET,2SK2158	A.....
Q	351	87-A30-087-080	C-FET,2SK2158	A.....
Q	354	87-A30-087-080	C-FET,2SK2158	A.....
SFR	302	87-024-355-080	SFR,33K DIA6 H	A.....
SFR	301	87-024-355-080	SFR,33K DIA6 H	A.....
SFR	303	87-024-355-080	SFR,33K DIA6 H	A.....
SFR	304	87-024-355-080	SFR,33K DIA6 H	A.....
SFR	306	87-024-356-080	SFR,47K DIA6 H	A.....
SFR	305	87-024-356-080	SFR,47K DIA6 H	A.....
C	104	87-010-196-080	CHIP CAPACITOR,0.1-25	A.....
C	105	87-010-196-080	CHIP CAPACITOR,0.1-25	A.....
C	115	87-010-401-080	CAP, ELECT 1-50V	A.....
C	112	87-010-401-080	CAP, ELECT 1-50V	A.....
C	111	87-010-401-080	CAP, ELECT 1-50V	A.....
C	116	87-010-401-080	CAP, ELECT 1-50V	A.....
C	121	87-010-406-080	CAP, ELECT 22-50	A.....
C	122	87-010-406-080	CAP, ELECT 22-50	A.....
C	152	87-010-260-080	CAP, ELECT 47-25V	A.....
C	161	87-010-184-080	CHIP CAPACITOR 3300P(K)	A.....
C	162	87-010-184-080	CHIP CAPACITOR 3300P(K)	A.....
C	163	87-010-196-080	CHIP CAPACITOR,0.1-25	A.....
C	178	87-010-197-080	CAP, CHIP 0.01 DM	A.....
C	177	87-010-197-080	CAP, CHIP 0.01 DM	A.....
C	174	87-012-368-080	C-CAP,S 0.1-50 F	A.....
C	172	87-012-368-080	C-CAP,S 0.1-50 F	A.....
C	171	87-012-368-080	C-CAP,S 0.1-50 F	A.....
C	173	87-012-368-080	C-CAP,S 0.1-50 F	A.....
C	175	87-A11-572-080	C-CAP,S 0.015-50 K B	A.....
C	176	87-A11-572-080	C-CAP,S 0.015-50 K B	A.....
CN	101	87-A60-996-010	CONN,13P V BLK TAC-L13X-A3	A.....
D	101	87-020-465-080	DIODE,1SS133 (110MA)	A.....
J	102	87-A60-238-010	TERMINAL,SP 4P (MSC)	A.....
J	103	87-A60-483-010	JACK,DIA6.3 BLK ST W/S KM	A.....
L	101	87-A50-610-010	COIL,1UH K(MDEC)	A.....
L	102	87-A50-610-010	COIL,1UH K(MDEC)	A.....
Q	103	87-A30-076-080	C-TR,2SC3052F	A.....
Q	108	87-A30-076-080	C-TR,2SC3052F	A.....
Q	109	87-A30-076-080	C-TR,2SC3052F	A.....
Q	107	87-A30-076-080	C-TR,2SC3052F	A.....
Q	104	87-A30-076-080	C-TR,2SC3052F	A.....
Q	101	87-A30-086-040	C-TR,CSD1306E	A.....
Q	102	87-A30-086-040	C-TR,CSD1306E	A.....
Q	106	87-A30-269-040	C-FET,2SJ461-T1	A.....
Q	105	87-A30-269-040	C-FET,2SJ461-T1	A.....
Q	113	87-A30-075-080	C-TR,2SA1235F	A.....
Q	110	87-A30-076-080	C-TR,2SC3052F	A.....
Q	115	87-A30-076-080	C-TR,2SC3052F	A.....
Q	114	87-A30-105-080	C-TR,RT1P 441C	A.....
R	117	87-012-142-080	CAP, S 0.33-16	A.....
R	118	87-012-142-080	CAP, S 0.33-16	A.....
R	164	87-A00-441-050	RES,270-1/2W J RP	A.....
R	161	87-A00-441-050	RES,270-1/2W J RP	A.....
R	162	87-A00-441-050	RES,270-1/2W J RP	A.....
R	163	87-A00-441-050	RES,270-1/2W J RP	A.....
C	974	87-010-197-080	CAP, CHIP 0.01 DM	A.....
C	973	87-010-197-080	CAP, CHIP 0.01 DM	A.....
C	979	87-010-322-080	C-CAP,S 100P-50 CH	A.....
C	971	87-010-381-080	CAP, ELECT 330-16V	A.....
C	972	87-010-404-080	CAP, ELECT 4.7-50V	A.....
C	982	87-010-196-080	CHIP CAPACITOR,0.1-25	A.....
C	984	87-010-197-080	CAP, CHIP 0.01 DM	A.....
C	983	87-010-197-080	CAP, CHIP 0.01 DM	A.....
C	987	87-010-197-080	CAP, CHIP 0.01 DM	A.....
C	981	87-010-260-080	CAP, ELECT 47-25V	A.....
C	993	87-010-178-080	CHIP CAP 1000P	A.....
C	995	87-010-178-080	CHIP CAP 1000P	A.....
C	997	87-010-196-080	CHIP CAPACITOR,0.1-25	A.....
C	991	87-010-312-080	C-CAP,S 15P-50 CH	A.....
C	992	87-010-312-080	C-CAP,S 15P-50 CH	A.....
C	999	87-A11-155-080	CAP,TC U 0.01-16 Z F	A.....
D	804	87-020-465-080	DIODE,1SS133 (110MA)	A.....
D	991	87-017-149-080	ZENER,HZS6A2L	A.....
IC	991	87-070-127-110	IC,LC72131 D	A.....
JW	991	87-003-216-080	F-BEAD,BLO1RM1	A.....
Q	981	87-A30-234-080	TR,CSC4115BC	A.....
X	991	87-A70-061-010	VIB,XTAL 4.500MHZ CSA-309	A.....
C	779	87-010-182-080	C-CAP,S 2200P-50 B	A.....
C	774	87-010-184-080	CHIP CAPACITOR 3300P(K)	A.....
C	773	87-010-184-080	CHIP CAPACITOR 3300P(K)	A.....
C	771	87-010-263-080	CAP, ELECT 100-10V	A.....
C	788	87-010-149-080	C-CAP,S 5P-50 CH	A.....

ELECTRICAL MAIN PARTS LIST - 6/8

C	780	87-010-182-080	C-CAP,S 2200P-50 B	A.....
C	789	87-A10-592-080	C-CAP,S 0.015-50 J B	A.....
C	791	87-010-196-080	CHIP CAPACITOR,0.1-25	A.....
C	797	87-010-405-080	CAP, ELECT 10-50V	A.....
C	799	87-010-407-080	CAP, ELECT 33-50V	A.....
C	790	87-A10-592-080	C-CAP,S 0.015-50 J B	A.....
C	803	87-010-198-080	CAP, CHIP 0.022	A.....
C	804	87-010-263-080	CAP, ELECT 100-10V	A.....
C	807	87-010-400-080	CAP, ELECT 0.47-50V	A.....
C	809	87-010-401-080	CAP, ELECT 1-50V	A.....
C	808	87-010-401-080	CAP, ELECT 1-50V	A.....
C	801	87-010-403-080	CAP, ELECT 3.3-50V	A.....
C	800	87-012-369-080	C-CAP,S 0.047-50F	A.....
C	802	87-012-369-080	C-CAP,S 0.047-50F	A.....
C	819	87-010-179-080	CAP,CHIP S B1200P	A.....
C	818	87-010-180-080	C-CER 1500P	A.....
C	810	87-010-196-080	CHIP CAPACITOR,0.1-25	A.....
C	815	87-010-400-080	CAP, ELECT 0.47-50V	A.....
C	816	87-010-400-080	CAP, ELECT 0.47-50V	A.....
C	811	87-010-403-080	CAP, ELECT 3.3-50V	A.....
C	812	87-010-403-080	CAP, ELECT 3.3-50V	A.....
C	820	87-010-179-080	CAP,CHIP S B1200P	A.....
C	824	87-010-404-080	CAP, ELECT 4.7-50V	A.....
C	821	87-010-405-080	CAP, ELECT 10-50V	A.....
C	825	87-010-596-080	CAP, S 0.047-16	A.....
C	823	87-012-349-080	C-CAP,S 1000P-50 CH	A.....
D	803	87-020-465-080	DIODE,1SS133 (110MA)	A.....
IC	801	87-A21-560-010	IC,LA1844L-A	A.....
L	801	87-A50-608-010	COIL,FM DET-N(TOK)	A.....
L	802	87-A91-551-010	FLTR,PCFJZH-450 L(TOK)	A.....
L	811	87-005-847-080	COIL,2.2UH(CECS)	A.....
L	822	87-A50-027-010	COIL,1 POLE MPX(TOK)	A.....
L	821	87-A50-027-010	COIL,1 POLE MPX(TOK)	A.....
Q	802	87-A30-076-080	C-TR,2SC3052F	A.....
Q	801	87-A30-076-080	C-TR,2SC3052F	A.....
R	790	87-010-197-080	CAP, CHIP 0.01 DM	A.....
C	869	87-010-197-080	CAP, CHIP 0.01 DM	A.....
C	875	87-010-196-080	CHIP CAPACITOR,0.1-25	A.....
C	877	87-010-197-080	CAP, CHIP 0.01 DM	A.....
C	879	87-010-314-080	C-CAP,S 22P-50V	A.....
C	878	87-010-316-080	C-CAP,S 33P-50 CH	A.....
C	876	87-010-405-080	CAP, ELECT 10-50V	A.....
C	874	87-010-405-080	CAP, ELECT 10-50V	A.....
C	873	87-012-140-080	CAP 470P	A.....
C	872	87-012-156-080	C-CAP,S 220P-50 CH	A.....
C	871	87-012-156-080	C-CAP,S 220P-50 CH	A.....
C	870	87-018-131-080	CAP, CER 1000P-50V	A.....
IC	861	87-A20-440-040	C-IC,BU1920FS	A.....
L	861	87-005-847-080	COIL,2.2UH(CECS)	A.....
Q	863	87-A30-076-080	C-TR,2SC3052F	A.....
Q	861	87-A30-076-080	C-TR,2SC3052F	A.....
Q	862	87-A30-468-080	C-TR,KRC102S-RTK	A.....
X	861	87-A70-091-010	VIB,XTAL 4.332MHZ CSA-309	A.....
C	831	87-010-406-080	CAP, ELECT 22-50	A.....
C	849	87-010-196-080	CHIP CAPACITOR,0.1-25	A.....
C	844	87-010-197-080	CAP, CHIP 0.01 DM	A.....
C	842	87-010-197-080	CAP, CHIP 0.01 DM	A.....
C	852	87-010-197-080	CAP, CHIP 0.01 DM	A.....
C	851	87-010-197-080	CAP, CHIP 0.01 DM	A.....
C	853	87-010-197-080	CAP, CHIP 0.01 DM	A.....
C	850	87-010-260-080	CAP, ELECT 47-25V	A.....
C	860	87-010-197-080	CAP, CHIP 0.01 DM	A.....
C	942	87-010-149-080	C-CAP,S 5P-50 CH	A.....
C	948	87-012-140-080	CAP 470P	A.....
C	957	87-010-311-080	CAP 12P	A.....
C	961	87-010-152-080	C-CAP,S 8P-50 CH	A.....
C	962	87-010-401-080	CAP, ELECT 1-50V	A.....
C	963	87-015-785-080	CHIP CAPACITOR, 0.1FZ-25Z	A.....
CF	832	82-785-747-010	CF MS2 GHY R	A.....
CF	831	87-008-423-010	CERAMIC FILTER, SFE10.7	A.....
D	944	87-020-465-080	DIODE,1SS133 (110MA)	A.....
D	942	87-A40-270-080	C-DIODE,MC2838	A.....
FFE	831	A8-6ZA-191-130	6ZA-1 FEENM	A.....
J	831	87-A60-202-010	TERMINAL,ANT 4P MSP-154V-02	A.....
J	832	87-A60-403-010	TERMINAL,ANT PAL 2P HSP-312V05	A.....
L	832	87-005-847-080	COIL,2.2UH(CECS)	A.....
L	942	87-A50-019-010	COIL,OSC LW(COI)	A.....
L	941	87-A50-020-010	COIL,ANT LW(COI)	A.....
L	951	8A-NF8-668-010	COIL,AM PACK 2(TOK)	A.....
Q	836	87-A30-489-080	C-TR,KRA107S	A.....
Q	835	89-327-143-080	TR,2SC2714 (0.1W)	A.....
Q	948	87-A30-086-040	C-TR,CSD1306E	A.....
Q	952	87-A30-086-040	C-TR,CSD1306E	A.....
Q	951	87-A30-484-080	C-TR,KRA102S	A.....
Q	953	89-503-602-080	C-FET,2SK360E	A.....
TC	942	87-011-253-080	TRIMER,30P LAR	A.....
C	3	87-012-368-080	C-CAP,S 0.1-50 F	A.....



ELECTRICAL MAIN PARTS LIST - 7/8

C	4	87-012-368-080	C-CAP,S 0.1-50 F	A
C	26	87-010-990-080	CAP,E 33-100 SME	A
C	28	87-010-990-080	CAP,E 33-100 SME	A
C	25	87-010-990-080	CAP,E 33-100 SME	A
C	27	87-010-990-080	CAP,E 33-100 SME	A
C	22	87-016-035-090	CAP, E 6800-35 VR	A
C	21	87-016-035-090	CAP, E 6800-35 VR	A
C	26	87-016-300-080	CAP,E 22-100 SME	A
C	28	87-016-300-080	CAP,E 22-100 SME	A
C	32	87-010-197-080	CAP, CHIP 0.01 DM	A
C	34	87-010-247-080	CAP, ELECT 100-50V	A
C	31	87-010-263-080	CAP, ELECT 100-10V	A
C	36	87-010-381-080	CAP, ELECT 330-16V	A
C	39	87-010-393-080	CAP, ELECT 100-35V	A
C	38	87-010-393-080	CAP, ELECT 100-35V	A
C	35	87-010-406-080	CAP, ELECT 22-50	A
C	40	87-010-190-080	S CHIP F 0.01	A
C	60	87-010-403-080	CAP, ELECT 3.3-50V	A
C	82	87-010-260-080	CAP, ELECT 47-25V	A
C	81	87-010-374-080	CAP, ELECT 47-10V	A
C	80	87-010-401-080	CAP, ELECT 1-50V	A
CN	1	87-A60-996-010	CONN,13P V BLK TAC-L13X-A3	A
CN	92	87-A60-619-010	CONN,2P V 2MM JMT	A
CNA	3	87-049-919-010	CONN,3P EH V WHT	A
CNA	2	8A-NF3-640-110	CONN ASSY,3P (VM) ANF-3	A
CNA	1	8A-NF8-653-010	CONN ASSY,9P TID-A(480)	A
D	1	87-A40-673-090	DIODE,D10XB20	A
D	28	87-A40-553-080	DIODE,1N4003 LES	A
D	25	87-A40-553-080	DIODE,1N4003 LES	A
D	27	87-A40-553-080	DIODE,1N4003 LES	A
D	26	87-A40-553-080	DIODE,1N4003 LES	A
D	29	87-A40-781-080	ZENER,UZ36BSA	A
D	30	87-020-465-080	DIODE,1SS133 (110MA)	A
D	34	87-020-465-080	DIODE,1SS133 (110MA)	A
D	32	87-020-465-080	DIODE,1SS133 (110MA)	A
D	35	87-020-465-080	DIODE,1SS133 (110MA)	A
D	33	87-070-274-080	DIODE,1N4003 SEM	A
D	31	87-A40-764-080	ZENER,UZ10BSC	A
D	60	87-020-465-080	DIODE,1SS133 (110MA)	A
D	64	87-A40-269-080	C-DIODE,MC2836	A
D	63	87-A40-270-080	C-DIODE,MC2838	A
D	65	87-A40-768-080	ZENER,UZ16BSA	A
D	85	87-020-465-080	DIODE,1SS133 (110MA)	A
D	84	87-020-465-080	DIODE,1SS133 (110MA)	A
Q	5	87-026-610-080	TR,KTC3198GR	A
Q	8	87-A30-075-080	C-TR,2SA1235F	A
Q	6	87-A30-076-080	C-TR,2SC3052F	A
Q	2	87-A30-217-010	TR,2SB1436 (R)	A
Q	1	87-A30-217-010	TR,2SB1436 (R)	A
Q	9	87-A30-318-080	TR,CSA952K	A
Q	10	87-A30-076-080	C-TR,2SC3052F	A
Q	13	89-213-702-010	TR,2SB1370 (1.8W)	A
Q	14	89-213-702-010	TR,2SB1370 (1.8W)	A
Q	63	87-A30-075-080	C-TR,2SA1235F	A
Q	61	87-A30-075-080	C-TR,2SA1235F	A
Q	60	87-A30-076-080	C-TR,2SC3052F	A
Q	62	87-A30-076-080	C-TR,2SC3052F	A
Q	64	87-A30-076-080	C-TR,2SC3052F	A
Q	81	87-A30-076-080	C-TR,2SC3052F	A
Q	84	87-A30-218-080	TR,2SB1237(Q)	A
WH	1	87-A90-510-010	HLDR,WIRE 2.5-9P	A
C	604	87-010-318-080	C-CAP,S 47P-50 CH	A
C	606	87-010-318-080	C-CAP,S 47P-50 CH	A
C	605	87-010-318-080	C-CAP,S 47P-50 CH	A
C	603	87-010-318-080	C-CAP,S 47P-50 CH	A
C	616	87-010-180-080	C-CER 1500P	A
C	613	87-010-197-080	CAP, CHIP 0.01 DM	A
C	617	87-010-198-080	CAP, CHIP 0.022	A
C	619	87-010-263-080	CAP, ELECT 100-10V	A
C	612	87-010-369-080	C-CAP,S 0.033-25 K B	A
C	618	87-010-401-080	CAP, ELECT 1-50V	A
C	611	87-010-956-080	CHIP-CAP,S 0.068-25B	A
C	614	87-016-669-080	C-CAP,S 0.1-25 K B	A
C	621	87-010-197-080	CAP, CHIP 0.01 DM	A
C	628	87-010-400-080	CAP, ELECT 0.47-50V	A
C	627	87-010-400-080	CAP, ELECT 0.47-50V	A
C	624	87-010-401-080	CAP, ELECT 1-50V	A
C	623	87-010-401-080	CAP, ELECT 1-50V	A
C	629	87-010-992-080	C-CAP,S 0.047-25 B	A
C	626	87-010-992-080	C-CAP,S 0.047-25 B	A
C	620	87-016-669-080	C-CAP,S 0.1-25 K B	A
C	632	87-010-185-080	C-CAP,S 3900P-50 B	A
C	631	87-010-185-080	C-CAP,S 3900P-50 B	A
C	630	87-010-383-080	CAP, ELECT 33-25V	A
C	639	87-010-405-080	CAP, ELECT 10-50V	A
C	637	87-A10-307-080	CAP,M 0.1-50 J	A
C	636	87-A10-307-080	CAP,M 0.1-50 J	A

# ELECTRICAL MAIN PARTS LIST - 8/8

C	638	87-A10-307-080	CAP,M 0.1-50 J	A.....
C	635	87-A10-307-080	CAP,M 0.1-50 J	A.....
C	641	87-010-401-080	CAP, ELECT 1-50V	A.....
C	642	87-010-401-080	CAP, ELECT 1-50V	A.....
C	673	87-010-197-080	CAP, CHIP 0.01 DM	A.....
C	672	87-010-322-080	C-CAP,S 100P-50 CH	A.....
C	671	87-010-322-080	C-CAP,S 100P-50 CH	A.....
C	680	87-010-196-080	CHIP CAPACITOR,0.1-25	A.....
CN	605	87-099-568-010	CONN,11P TUC-P11P-B1	A.....
CN	601	87-099-719-010	CONN,30P TYK-B(X)	A.....
CN	602	87-A60-131-010	CONN,6P V FE	A.....
D	603	87-020-465-080	DIODE,1SS133 (110MA)	A.....
D	602	87-A40-438-080	ZENER,MTZJ4.7A	A.....
IC	601	87-A21-452-030	C-IC,BD3876KS2	A.....
J	601	87-A60-885-010	JACK,PIN 6P R/W MSC	A.....
JW	646	87-A90-896-080	F-BEAD, 035600STY7	A.....
JW	659	87-A90-896-080	F-BEAD, 035600STY7	A.....
Q	601	87-026-610-080	TR,KTC3198GR	A.....
Q	609	87-A30-075-080	C-TR,2SA1235F	A.....
Q	608	87-A30-075-080	C-TR,2SA1235F	A.....
Q	607	87-A30-075-080	C-TR,2SA1235F	A.....
Q	606	87-A30-086-070	C-TR,CSD1306E	A.....
Q	605	87-A30-086-070	C-TR,CSD1306E	A.....
Q	603	87-A30-087-080	C-FET,2SK2158	A.....
Q	602	87-A30-269-040	C-FET,2SJ461-T1	A.....
C	506	87-010-184-080	CHIP CAPACITOR 3300P(K)	A.....
C	502	87-010-196-080	CHIP CAPACITOR,0.1-25	A.....
C	501	87-010-263-080	CAP, ELECT 100-10V	A.....
C	505	87-012-141-080	CHIP-CAPACITOR,0.22-16F	A.....
C	503	87-016-460-080	C-CAP,S 0.22-16 B	A.....
C	504	87-016-460-080	C-CAP,S 0.22-16 B	A.....
C	508	87-016-669-080	C-CAP,S 0.1-25 K B	A.....
C	509	87-016-669-080	C-CAP,S 0.1-25 K B	A.....
C	507	87-A11-550-080	C-CAP,S 820P-50 K B	A.....
C	518	87-010-183-080	C-CAP,S 2700P-50 B	A.....
C	517	87-010-183-080	C-CAP,S 2700P-50 B	A.....
C	510	87-010-184-080	CHIP CAPACITOR 3300P(K)	A.....
C	514	87-010-374-080	CAP, ELECT 47-10V	A.....
C	516	87-010-401-080	CAP, ELECT 1-50V	A.....
C	515	87-010-401-080	CAP, ELECT 1-50V	A.....
C	513	87-010-544-080	CAP, ELECT 0.1-50V	A.....
C	512	87-016-460-080	C-CAP,S 0.22-16 B	A.....
C	511	87-A11-550-080	C-CAP,S 820P-50 K B	A.....
C	535	87-010-178-080	CHIP CAP 1000P	A.....
C	532	87-010-196-080	CHIP CAPACITOR,0.1-25	A.....
C	536	87-010-196-080	CHIP CAPACITOR,0.1-25	A.....
C	533	87-010-196-080	CHIP CAPACITOR,0.1-25	A.....
C	538	87-010-318-080	C-CAP,S 47P-50 CH	A.....
C	531	87-010-560-080	CAP,E 10-50 GAS	A.....
C	534	87-012-156-080	C-CAP,S 220P-50 CH	A.....
C	541	87-010-178-080	CHIP CAP 1000P	A.....
D	501	87-A40-747-080	ZENER,UZ5.1BSB	A.....
FB	501	87-008-372-080	FILTER, EMI BL OIRNI	A.....
IC	501	87-A21-018-040	C-IC,M65849BFP631D	A.....
Q	532	87-A30-075-080	C-TR,2SA1235F	A.....
Q	531	87-A30-076-080	C-TR,2SC3052F	A.....
C	201	87-010-402-080	CAP, ELECT 2.2-50V	A.....
C	202	87-010-402-080	CAP, ELECT 2.2-50V	A.....
C	205	87-010-404-080	CAP, ELECT 4.7-50V	A.....
C	209	87-016-460-080	C-CAP,S 0.22-16 B	A.....
C	207	87-016-669-080	C-CAP,S 0.1-25 K B	A.....
C	208	87-016-669-080	C-CAP,S 0.1-25 K B	A.....
C	219	87-010-183-080	C-CAP,S 2700P-50 B	A.....
C	216	87-010-197-080	CAP, CHIP 0.01 DM	A.....
C	215	87-010-197-080	CAP, CHIP 0.01 DM	A.....
C	218	87-010-198-080	CAP, CHIP 0.022	A.....
C	217	87-010-198-080	CAP, CHIP 0.022	A.....
C	214	87-010-956-080	CHIP-CAP,S 0.068-25B	A.....
C	213	87-010-956-080	CHIP-CAP,S 0.068-25B	A.....
C	211	87-012-365-080	C-CAP,S 0.027-25VBK	A.....
C	212	87-012-365-080	C-CAP,S 0.027-25VBK	A.....
C	210	87-016-460-080	C-CAP,S 0.22-16 B	A.....
C	227	87-010-112-080	CAP, ELECT 100-16V	A.....
C	223	87-010-178-080	CHIP CAP 1000P	A.....
C	224	87-010-178-080	CHIP CAP 1000P	A.....
C	226	87-010-182-080	C-CAP,S 2200P-50 B	A.....
C	225	87-010-182-080	C-CAP,S 2200P-50 B	A.....
C	220	87-010-183-080	C-CAP,S 2700P-50 B	A.....
C	222	87-010-188-080	CAP,CHIP 6800P	A.....
C	221	87-010-188-080	CAP,CHIP 6800P	A.....
C	228	87-010-196-080	CHIP CAPACITOR,0.1-25	A.....
C	229	87-010-322-080	C-CAP,S 100P-50 CH	A.....
C	230	87-010-322-080	C-CAP,S 100P-50 CH	A.....
C	231	87-010-322-080	C-CAP,S 100P-50 CH	A.....
CN	201	87-A60-546-010	CONN,11P H GRY TUC-P11X-C1	A.....
IC	201	87-A20-869-040	C-IC,M62449FP	A.....

# MECHANICAL PARTS LIST - 1/2

NOTE: The characters in the suffix column indicate the part usage.

REF.NO	PARTS NO.	DESCRIPTION	SUFFIX
LH5K2M	.....XX.....	KANRI	B.....
		NO.	
	88-NF3-090-010	RING, FOOT	AB.....
	8A-NF3-017-010	CABI, REAR GSM	.....
	8A-NF3-028-010	BOX, CASS L	AB.....
	8A-NF3-029-010	BOX, CASS R	AB.....
	8A-NF3-031-010	PANEL, FR U	.....
	8A-NF3-032-010	PANEL, FR H	.....
	8A-NF3-033-010	PANEL, FR EZ	A.....
	8A-NF3-034-010	PANEL, FR LH	.B.....
	8A-NF3-039-010	PANEL, CASS L	AB.....
	8A-NF3-040-010	PANEL, CASS R	AB.....
	8A-NF3-042-010	PANEL ASSY, TRAY	AB.....
	8A-NF3-047-010	PANEL, CD	AB.....
	8A-NF3-048-010	PANEL, REFLECTOR- CD	AB.....
	8A-NF3-049-010	PANEL, KEY-CD	AB.....
	8A-NF3-051-010	WINDOW, DISP	A.....
	8A-NF3-052-010	WINDOW, DISP NT-96	.B.....
	8A-NF3-053-010	WINDOW, DISP EHA	.....
	8A-NF3-058-010	WINDOW, CASS L	AB.....
	8A-NF3-059-010	WINDOW, CASS R	AB.....
	8A-NF4-015-010	CABI, REAR JLH5K1M	.B.....
	8Z-NF3-048-010	COVER, BOTTOM	AB.....
*	8A-NF3-001-010	CABI, FR	.B.....
*	8A-NF3-002-010	CABI, FR EZ	A.....
*	8A-NF3-011-010	CABI, REAR LH5M	.....
*	8A-NF3-011-110	CABI, REAR LH5M	.....
*	8A-NF3-012-010	CABI, REAR HRJ5M	.....
*	8A-NF3-014-010	CABI, REAR EZ5M	A.....
*	8A-NF3-015-010	CABI, REAR HASM	.....
*	8A-NF3-016-010	CABI, REAR K5M	.....
*	8A-NF3-026-010	CABI, BOTTOM	A.....
*	8A-NF3-026-110	CABI, BOTTOM	.B.....
*	8A-NF3-027-010	CABI, STEEL	AB.....
	8A-NF3-061-010	KEY, GEO	AB.....
	8A-NF3-062-010	KEY, DSP	AB.....
	8A-NF3-063-010	KEY ASSY, OPE	AB.....
	8A-NF3-065-010	KEY, KARAOKE	AB.....
	8A-NF3-066-110	KEY, REC	A.....
	8A-NF3-067-010	KEY, BBE	AB.....
	8A-NF3-068-010	KEY, JOG	AB.....
	8A-NF3-069-010	KEY, SPICE	.B.....
	8A-NF3-070-010	KEY, ECO	AB.....
	8A-NF3-071-010	KEY, CD	AB.....
	8A-NF3-072-010	KEY, FUNC	AB.....
	8A-NF3-073-110	KEY, REC U	.B.....
	8A-NF3-074-110	KEY, REC H	.....
	8A-NF3-076-010	RING, VOL	AB.....
	8A-NF3-077-010	RING, JOG H	.B.....
	8A-NF3-078-010	RING, JOG U	A.....
	8A-NF3-081-010	KNOB, RTRY VOL	AB.....
	8A-NF3-082-010	KNOB, RTRY JOG	AB.....
	81-532-080-010	LABEL, CASS. COMPT	AB.....
	8A-NF3-087-010	REFLECTOR, JOG	AB.....
	8A-NF3-088-010	REFLECTOR, FUNC	AB.....
	8A-NF3-089-010	REFLECTOR, CD	AB.....
	8A-NF3-090-010	REFLECTOR, CASS L	AB.....
	8A-NF3-091-010	REFLECTOR, CASS R	AB.....
	8Z-NF3-643-010	CONN ASSY, 3P PB	AB.....
	8Z-NF3-644-010	CONN ASSY, 8P RPB	AB.....
	84-ZG1-245-210	CAP, OPTICAL	AB.....
	82-NF5-218-010	SPR-T, EJECT 1 (SIN)	AB.....
	82-NF5-219-010	SPR-T, EJECT 2 (SIN)	AB.....
	82-NF5-229-010	PLATE, LOCK	AB.....
	86-NF9-224-010	SPR-C, LOCK	AB.....
	87-064-185-010	HLDR, WIRE	AB.....
	87-NF4-216-010	HLDR, LOCK 1	AB.....
	87-NF4-217-110	HLDR, LOCK 2	AB.....
	87-NF4-221-010	HLDR, CABLE	AB.....
	87-NF8-220-010	DMPR, 150	AB.....
	8A-NF3-213-110	HLDR, HT-SINK L	AB.....
	8A-NF3-225-010	COVER, HLDR	AB.....
	8A-NF3-228-010	HLDR, PWB-PT	AB.....
	8A-NF3-229-110	HLDR, BRACKET	A.....
	8A-NF3-229-210	HLDR, BRACKET	.B.....
*	8A-NF3-201-010	GUIDE, LED-FUNC	AB.....
*	8A-NF3-203-010	GUIDE, LED-CD	AB.....
*	8A-NF3-214-010	HLDR, HT-SINK R	AB.....
*	8A-NF3-221-010	HLDR, IC-VM	AB.....
*	8A-NF3-223-010	HLDR, FAN	AB.....
*	8A-NF8-206-010	HLDR, PWB M	AB.....
	87-067-579-010	TAPPING SCREW, BVT2+3-8	A.....
	87-067-581-010	TAPPING SCREW, BVT2+3-15	A.....

MECHANICAL PARTS LIST - 2/2

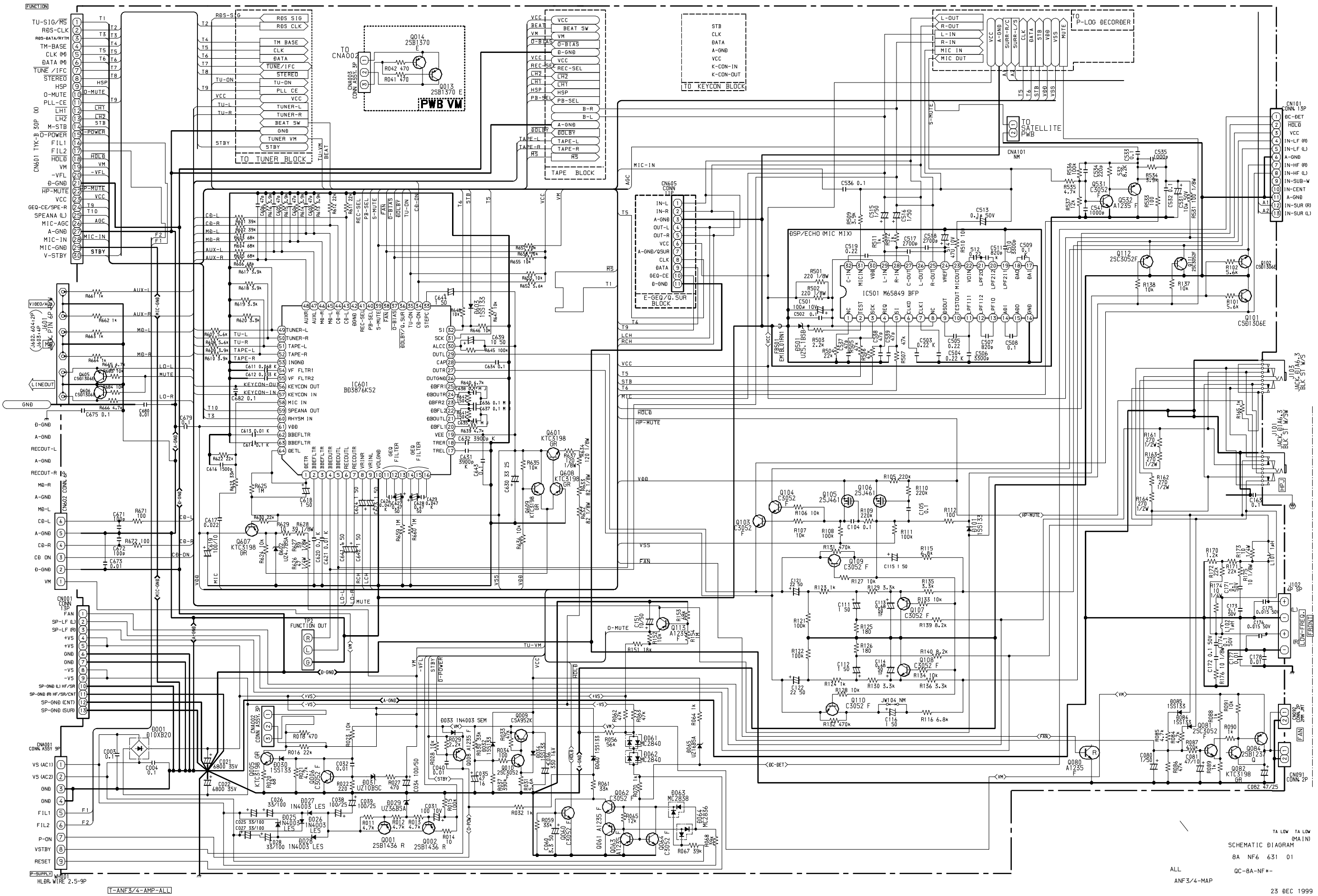
	87-067-641-010	UTT2+3-8 (W/O SLOT) BL	A.....
	87-067-689-010	TAPPING SCREW, BVT2+3-8	A.....
	87-067-703-010	TAPPING SCREW, BVT2+3-10	A.....
	87-067-758-010	BVT2+3-12 W/O SLOT	AB.....
	87-067-761-010	TAPPING SCREW, BVT2+3-10	AB.....
	87-067-975-010	S-SCREW, IT4-8	AB.....
	87-591-095-410	TAPPING SCREW, QIT+3-8 (GLD)	AB.....
	87-721-096-410	QT2+3-10 GLD	A.....
	87-721-097-410	QT2+3-12 GLD	A.....
	87-B10-190-010	BVT2+3-22 W/O SLOT	AB.....
	87-NF4-224-010	S-SCREW, IT3B+3-8 CU	AB.....
	87-067-579-010	TAPPING SCREW, BVT2+3-8	.B.....
	87-067-581-010	TAPPING SCREW, BVT2+3-15	.B.....
	87-067-641-010	UTT2+3-8 (W/O SLOT) BL	.B.....
	87-067-689-010	TAPPING SCREW, BVT2+3-8	.B.....
	87-067-703-010	TAPPING SCREW, BVT2+3-10	.B.....
	87-721-096-410	QT2+3-10 GLD	.B.....
	87-721-097-410	QT2+3-12 GLD	.B.....
*	8A-NF3-208-010	HLDR, CHAS L	AB.....
*	8A-NF3-209-010	HLDR, CHAS R	AB.....
*	8A-NF3-210-010	HLDR, SIDE L	AB.....
*	8A-NF3-211-010	HLDR, SIDE R	AB.....
*	8A-NF3-212-010	HLDR, REAR	AB.....
	87-010-182-080	C-CAP, S 2200P-50 B	.....
	87-010-260-080	CAP, ELECT 47-25V	AB.....
	87-012-156-080	C-CAP, S 220P-50 CH	AB.....
	87-018-123-080	CAP, CER 220P-50V	AB.....
	87-067-703-010	TAPPING SCREW, BVT2+3-10	.....
	87-085-185-010	BUSHING, AC CORD (E)	AB.....
	87-099-811-010	PLUG, ADPTR CONV (K)	.....
	87-591-095-410	TAPPING SCREW, QIT+3-8 (GLD)	.....
	87-A11-132-080	CAP, TC U 0.01-50 K B	A.....
	87-A40-747-080	ZENER, UZ5.1BSB	AB.....
	87-A80-105-010	AC CORD ASSY, AZ	.....
	87-A90-562-010	F-BEAD, 9.5-17.5-28.5 BRH	AB.....
	87-A91-423-010	FAN, AD0612DS-D7OGL	AB.....
	87-A91-711-010	FAN, 3110GL-B4W-B34-H02 -400MM	AB.....
	88-905-081-110	FF-CABLE, 5P 1.25	AB.....
	88-906-481-110	FF-CABLE, 6P 1.25 480MM	AB.....
	88-908-381-110	FF-CABLE, 8P 1.25	AB.....
	88-914-481-110	FF-CABLE, 14P 1.25 480MM	AB.....
	88-915-161-110	FF-CABLE, 15P 1.25	AB.....
C	496	87-A10-812-080	C-CAP, S 220P-200 J CH
C	495	87-A10-812-080	C-CAP, S 220P-200 J CH
F	101	87-035-458-010	FUSE, 4A 250V T W/C
F	102	87-035-459-010	FUSE, 5A 250V
F	101	87-035-459-010	FUSE, 5A 250V
PT	101	8A-NF3-602-010	PT, LH EI105-60 ANF-3
PT	101	8A-NF3-604-010	PT, EZ EI96-60 ANF-3
W	101	87-A80-143-010	AC CORD ASSY, E BLK
W	101	87-A80-146-010	AC CORD ASSY, G
W	101	87-A80-148-010	AC CORD ASSY, E BLK
		87-067-703-010	TAPPING SCREW, BVT2+3-10
		87-067-703-010	TAPPING SCREW, BVT2+3-10
WH	103	87-A90-459-010	HLDR, WIRE 2.5-5P

# ACCESSORIES / PACKAGE LIST - 1/1

NOTE: The characters in the suffix column indicate the part usage.

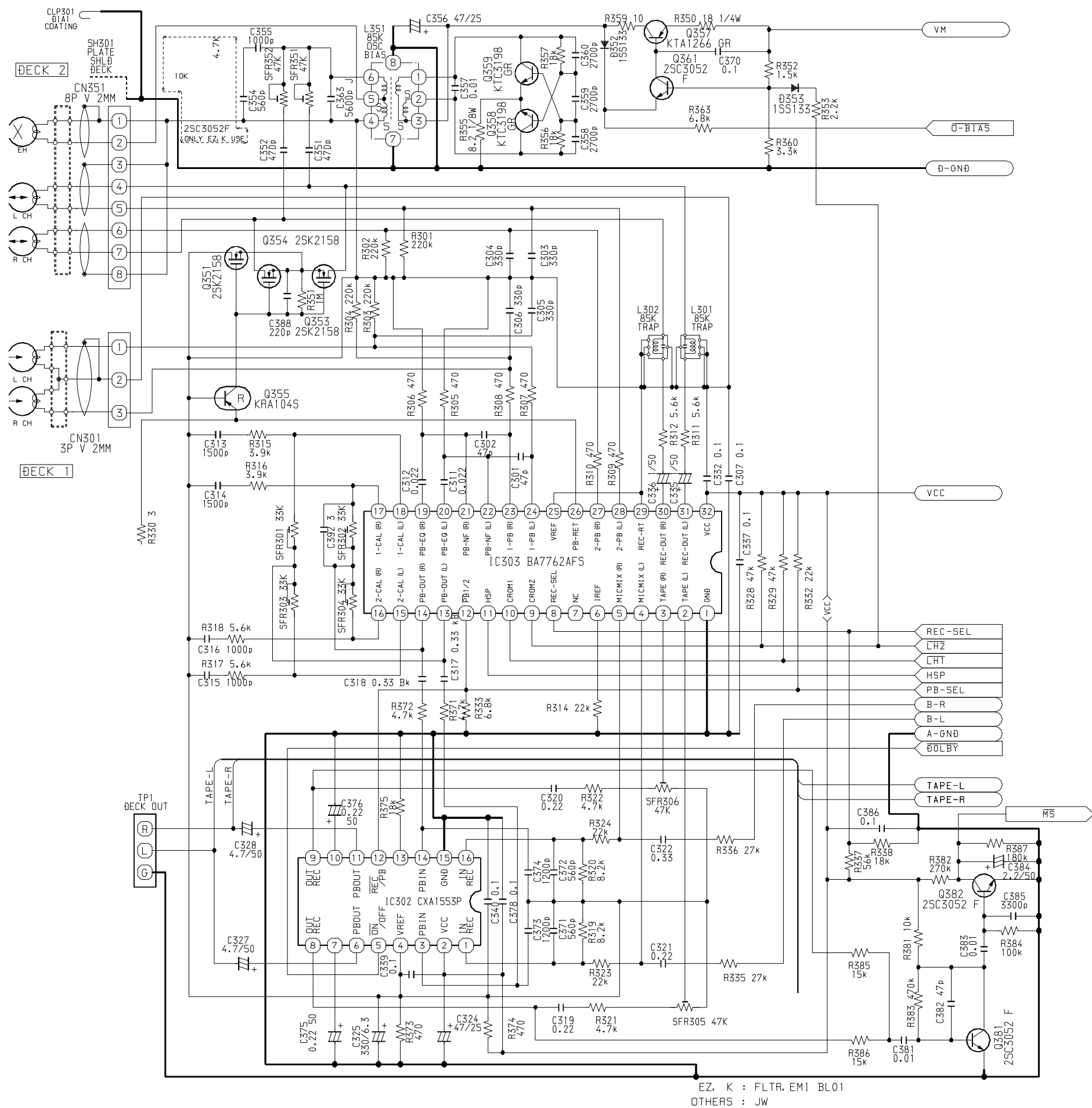
REF.NO	PARTS NO.	NO.	DESCRIPTION	SUFFIX
LHKS2M		XX		B
		KANRI		
	8A-NF3-901-010		IB,H (ECA) M	
	8A-NF3-902-010		IB,LH (ESP) M	
	8A-NF3-905-010		IB,K (E) M	
	8A-NF3-906-010		IB,EZ (9L) M	A
	8A-NF3-909-010		IB,G (E) M	
	8A-NF3-907-010		IB,HA (S) NEA-ARG	
	8A-NF3-908-010		IB,LH (P) KIT	B
	87-006-225-010		AM LOOP ANT NC2	AB
	87-006-269-010		AM LOOP ANT (UN)	
	87-043-106-010		WIRE, FM ANT (Z)	
	87-043-115-010		ANT,FEEDER FM	B
	87-A90-118-010		ANT,WIRE FM (Z)	A
	87-A90-119-010		ANT,WIRE SW (5M)	
	87-A91-017-010		PLUG,CONVERSION JT-0476	B
	8Z-NF5-702-010		RC UNIT,RC-ZAS04	AB

SCHEMATIC DIAGRAM - 1 (MAIN 1/3)



TA LOW TA HIGH  
 SCHEMATIC DIAGRAM  
 BA NF6 631 01  
 ALL QC-BA-NF\*-  
 ANF3/4-MAP  
 23 DEC 1999

SCHEMATIC DIAGRAM - 2 (MAIN 2/3 : DECK SECTION)



	WITH DOLBY	W/O_DOLBY (R+R)	W/O_DOLBY (R+1_1+1)
JR303	C-JR	X	X
JR304	C-JR	X	X
C379	X	22/25	22/50
C380	X	22/50	22/50
C313	1200P	1000P	1500P
C314	1200P	1000P	1500P
R315	4.7K	5.6K	5.6K
R316	4.7K	5.6K	5.6K
C315	1000P	1000P	2200P
C316	1000P	1000P	2200P
R317	5.6K	5.6K	5.6K
R318	5.6K	5.6K	5.6K
C391	270P	56P	56P
C392	270P	56P	56P
C393	270P	56P	56P
C394	270P	56P	56P
R395	X	100K	100K
R396	X	100K	100K
R397	X	100K	100K
R398	X	100K	100K
SFR301	33K	X	X
SFR302	33K	X	X
SFR303	33K	X	X
SFR304	33K	X	X
C317	0.33 BK	C-JR	C-JR
C318	0.33 BK	C-JR	C-JR
R371	4.7K	39	39
R372	4.7K	39	39
C375	0.22/50	X	X
C376	0.22/50	X	X
R375	18K	X	X
JR301	X	C-JR	C-JR
JR302	X	C-JR	C-JR

	WITH DOLBY	W/O_DOLBY (R+R+1_1+1)
IC302	CXA1553P	X
C309	X	0.1
C310	X	0.1
C319	0.22	X
C320	0.22	X
R321	4.7K	X
R322	4.7K	X
SFR305	50K	X
SFR306	50K	X
C371	820P	X
C372	820P	X
C373	1200P	0.15
C374	1200P	0.15
R319	4.7K	22K
R320	4.7K	22K
R323	22K	C-JR
R324	22K	C-JR
C321	0.22	0.33
C322	0.22	0.33
R335	27K	22K
R336	27K	22K
R391	X	15K
R392	X	15K
R385	15K	X
R386	15K	X
R383	470K	820K
C387	X	270P
C382	47P	15P
R389	C-JR	6.8K
Q383	X	2SA1235
C385	3300P	X

	USE BA7762AFS	USE HA12211
Q360	X	25K2158
R330	X	C-JR
R331	X	33K
JR336	X	C-JR

	EZ K MODEL	EXCEPT EZ K
Q356	25C3052F	X
R362	4.7K	X
R365	10K	X

	EZ K MODEL	EXCEPT EZ
FB301	EM1BL01RN	JW

TA LOW TA LOW  
SCHEMATIC DIAGRAM (DECK)  
8A NF6 631 01

ALL  
ANF3/4-DECK

23 DEC 1999

T-ANF3/4-DECK-ALL

EZ. K : FLTR. EMI BL01  
OTHERS : JW

SCHEMATIC DIAGRAM - 3 (MAIN 3/3 : TUNER SECTION)

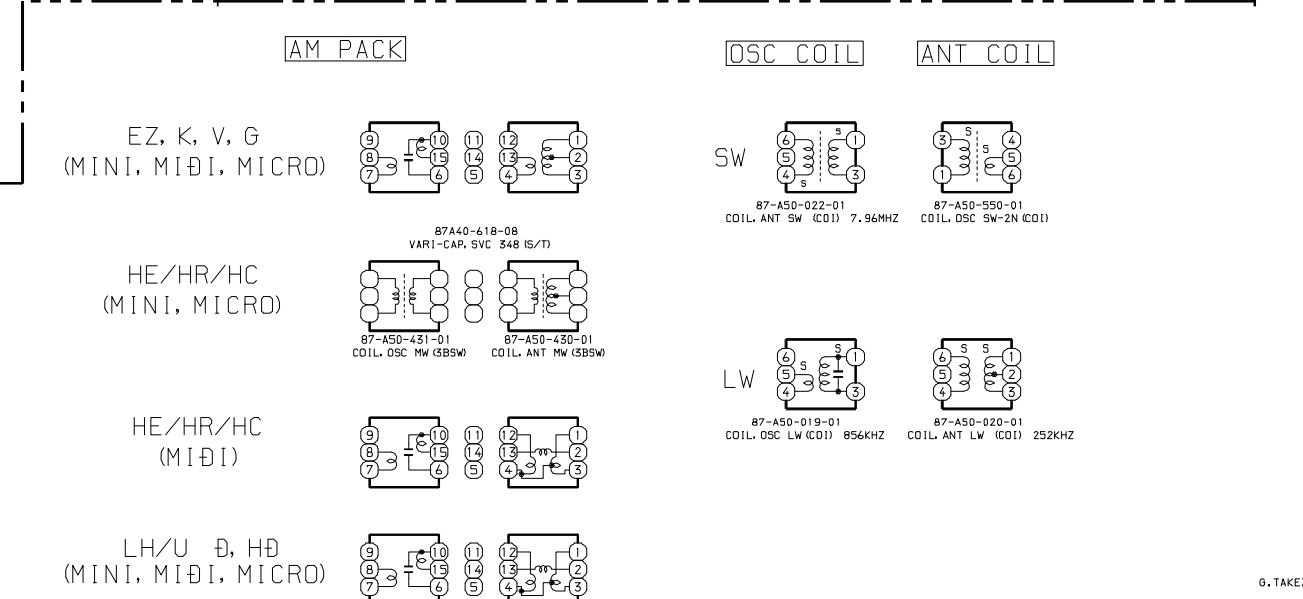
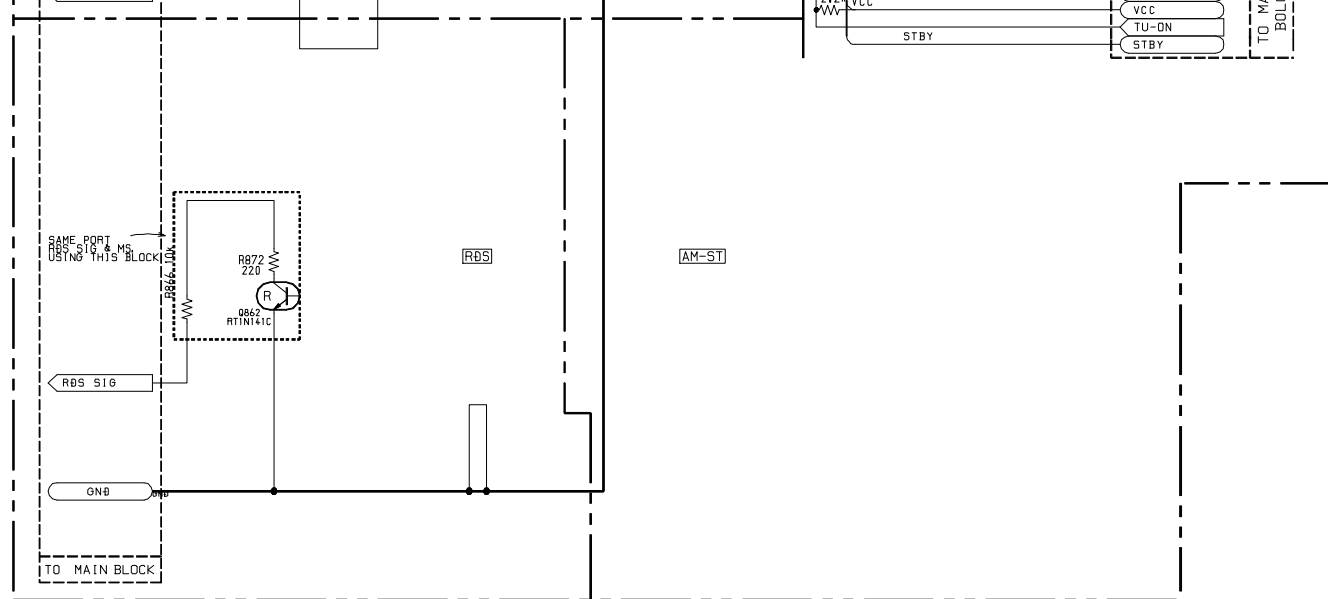
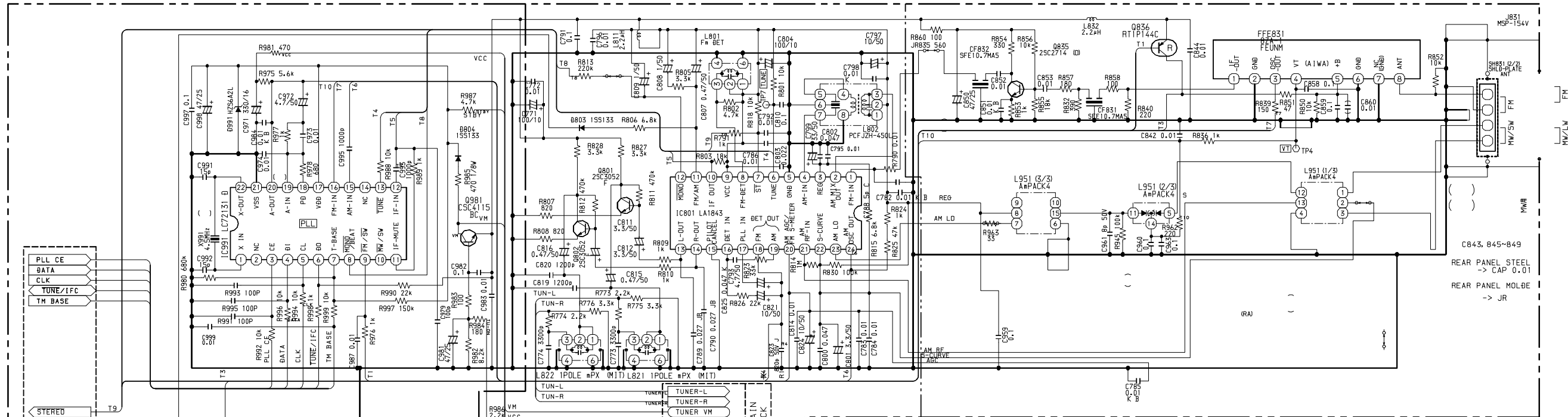
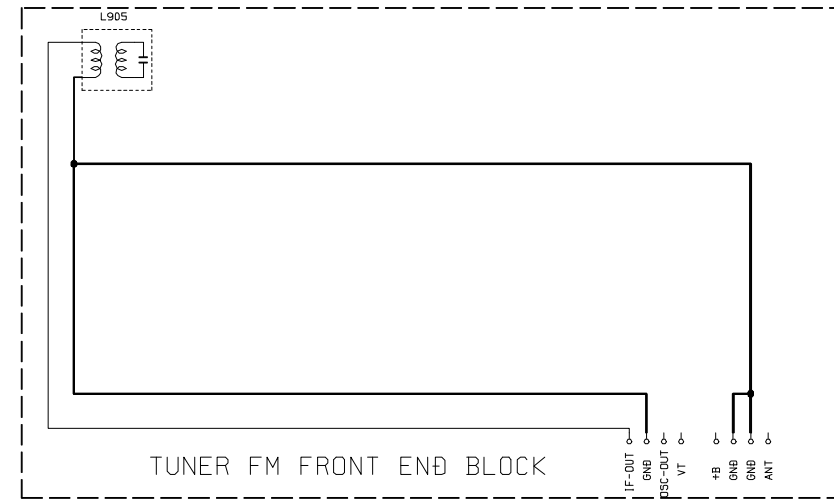
IFT COIL

	PARTS NO./ PARTS CODE		
	U/LH, EZ, K, G, V	HE/HR/HC	D/HØ
1ST	87-A91-551-01 FLTR, PCFJZH-450 L (TOK)	87-A91-552-01 FLTR, CFMT-450AL (TOK)	87-A91-553-01 FLTR, PCFMT-060L (TOK)
2ND			
3RD			

AM PACK

	PARTS NO./ PARTS CODE	
	U/LH, D/HØ, V	EZ, K, G
1ST	8A-NF8-667-01 COIL, AM PACK4 (TOK)	8A-NF8-668-01 COIL, AM PACK (TOK)
2ND		
3RD		

\*EXCEPT SW BAND MODEL (HE/HR/HC)



G. TAKEZAWA  
(TUNER)  
SCHEMATIC DIAGRAM

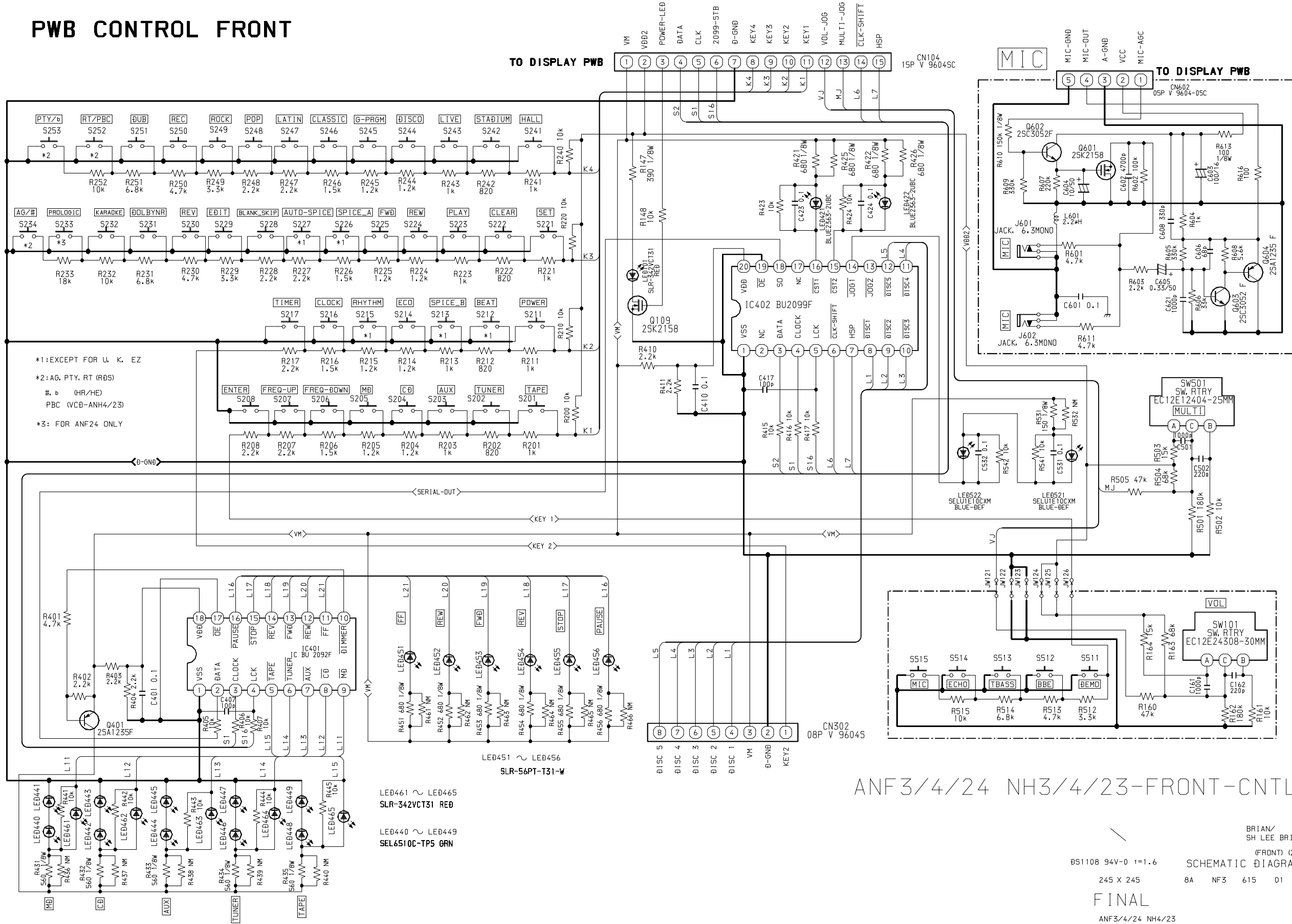
ALL  
ANF-3/4

27 DEC 1999

T-ANF3/4-TUNER-P1



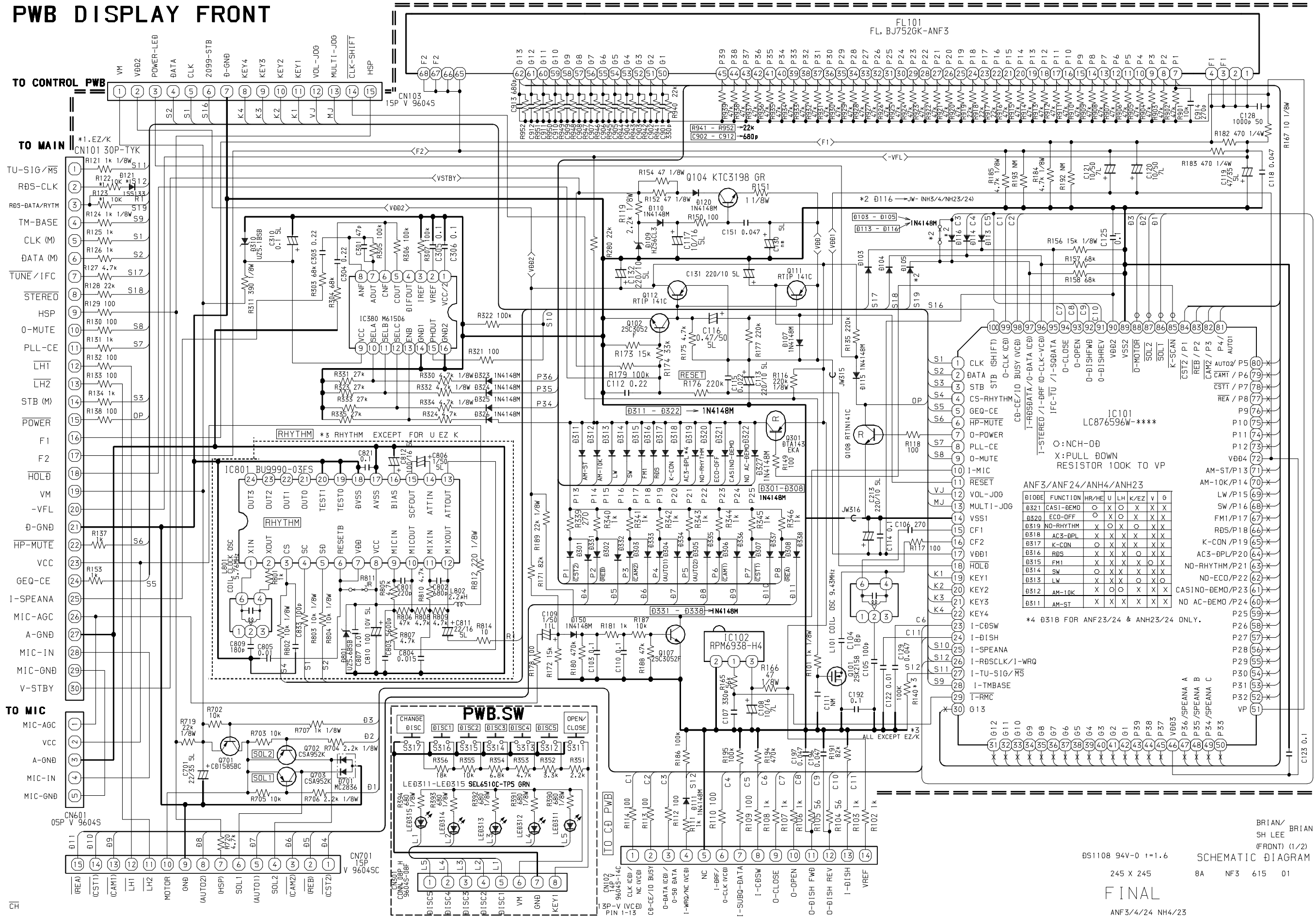
PWB CONTROL FRONT



ANF3/4/24 NH3/4/23-FRONT-CNTL

BRIAN/  
SH LEE BRIAN  
(FRONT) (2/2)  
SCHEMATIC DIAGRAM  
DS1108 94V-0 1=1.6  
245 X 245 8A NF3 615 01  
FINAL  
ANF3/4/24 NH4/23

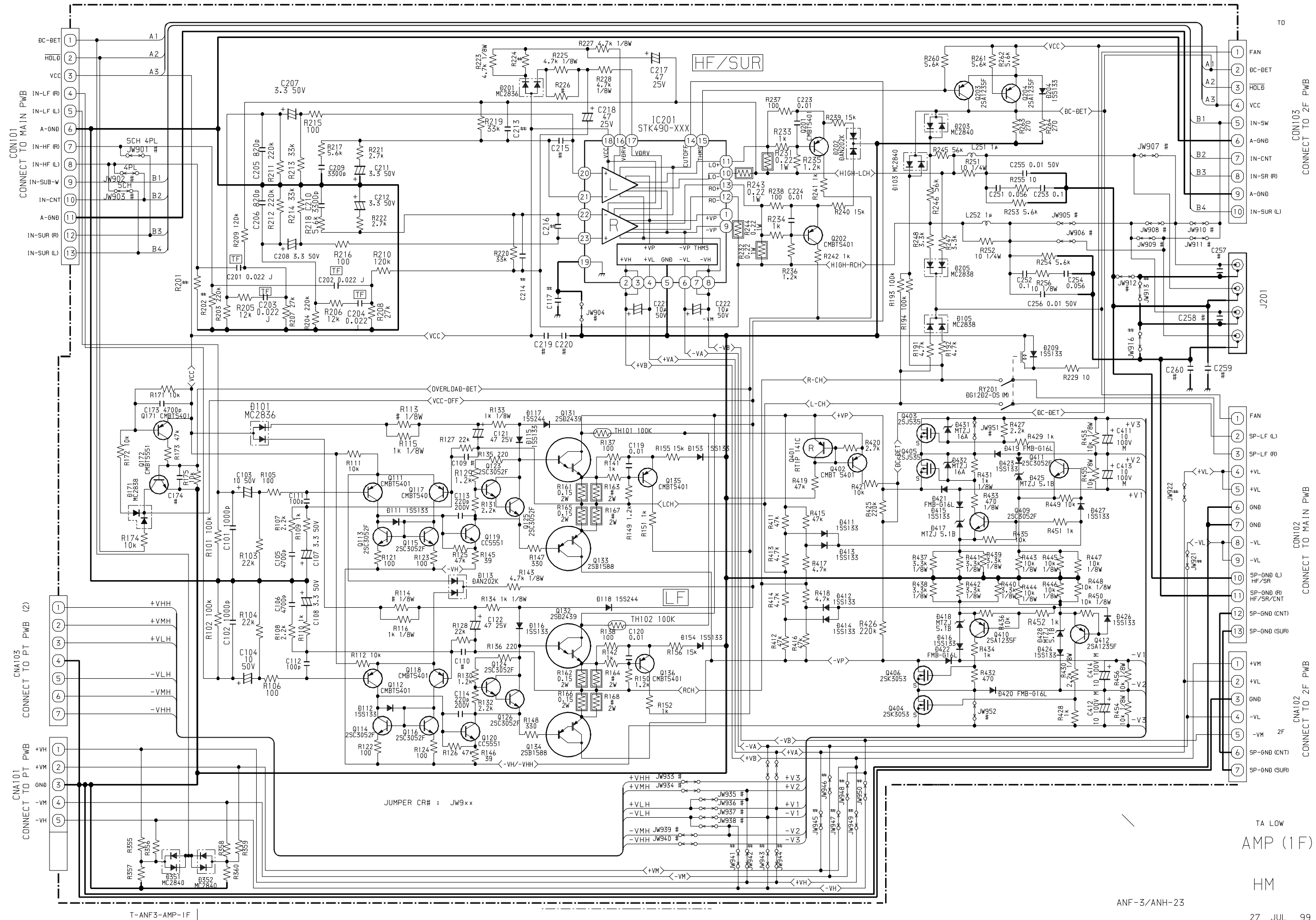
PWB DISPLAY FRONT



BRIAN / BRIAN  
SH LEE  
(FRONT) (1/2)  
SCHEMATIC DIAGRAM

DS1108 94V-0 1=1.6  
245 X 245  
8A NF3 615 01  
FINAL  
ANF3/4/24 NH4/23

SCHEMATIC DIAGRAM - 6 (AMP)

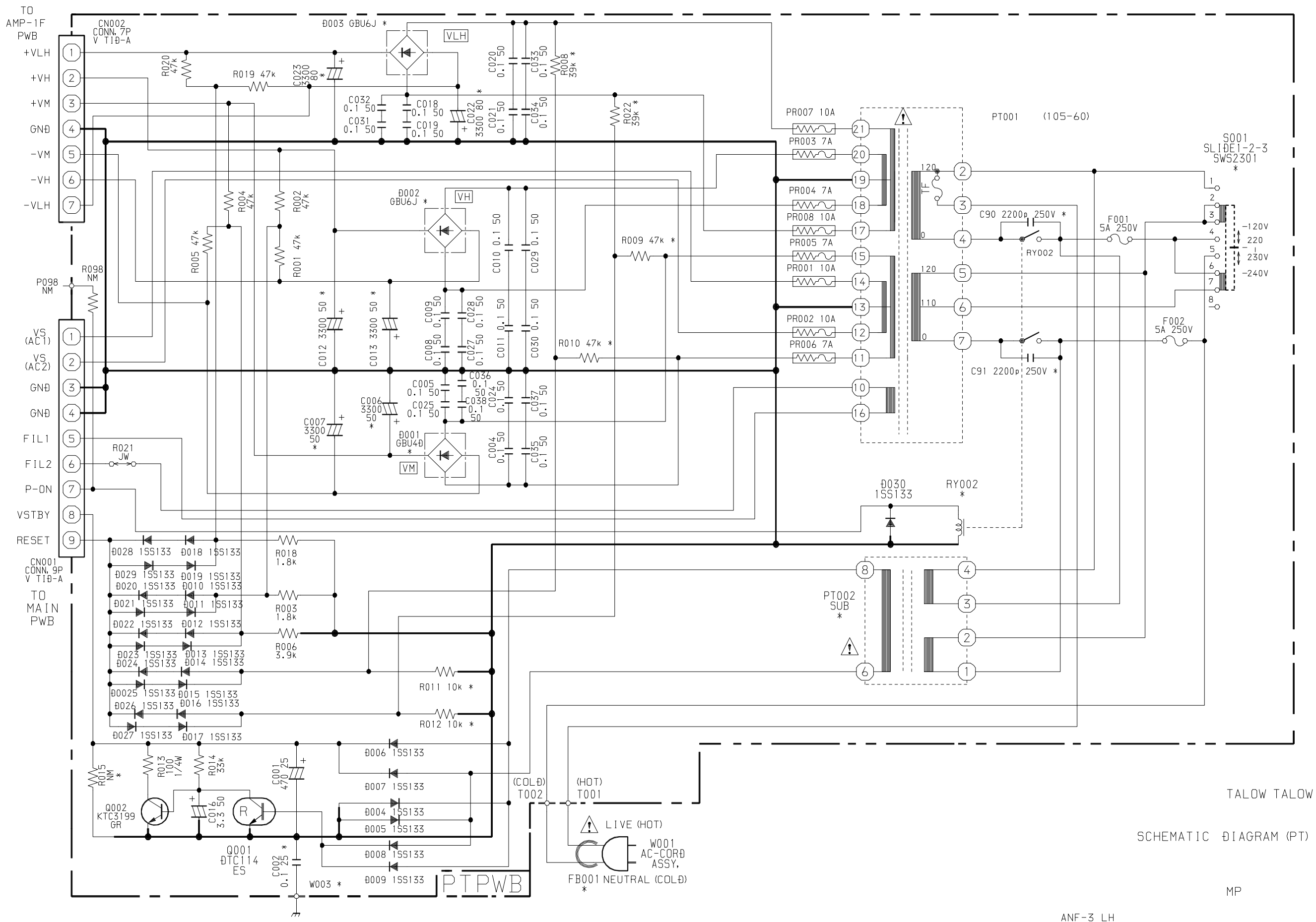


ANF-3/ANH-23

TA LOW  
AMP (1F)  
HM

27 JUL 99

SCHEMATIC DIAGRAM - 7 (PT)



TALOW TALOW  
SCHEMATIC DIAGRAM (PT)

MP

ANF-3 LH

20 DEC 1999

**アイワ株式会社** 〒110-8710 東京都台東区池之端1-2-11 ☎03(3827)3111 (代表)  
**AIWA CO.,LTD.** 2-11, IKENOHATA 1-CHOME, TAITO-KU, TOKYO 110, JAPAN TEL:03 (3827) 3111