

Manual de Serviço



**H
O
M
E

T
H
E
A
T
E
R

B
S
I

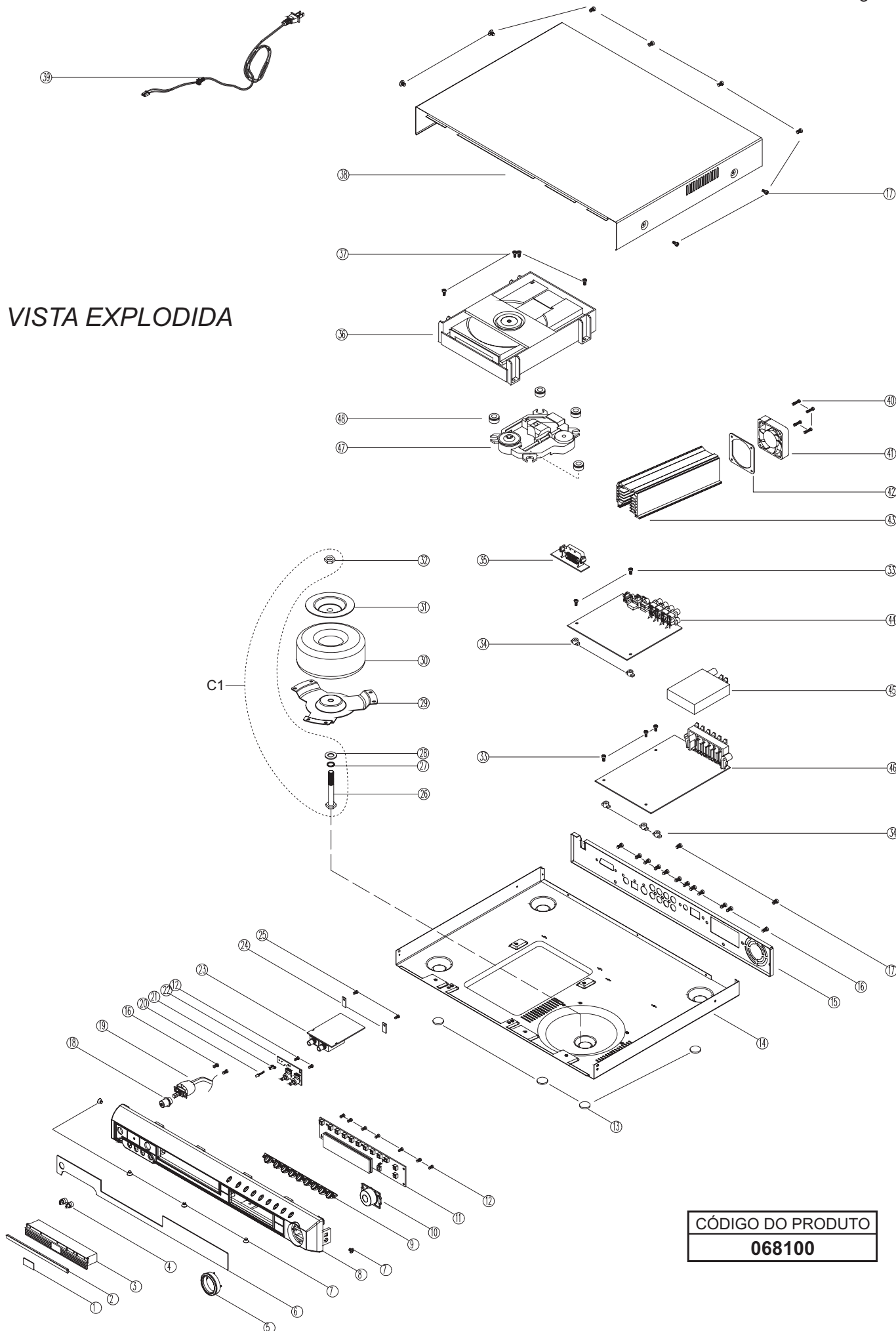
9
0
0
0
0**

0800 415300

assistenciatecnica@britania.com.br

Política da Qualidade Britânia

"Oferecer produtos que contribuam para a satisfação de nossos clientes, buscando a melhoria contínua de nossos processos"



CÓDIGO DO PRODUTO
068100

HOME THEATER BSI-9000

BRITANIA
ASSISTÊNCIA TÉCNICA

ITENS DA VISTA EXPLODIDA

Nº	DESCRIÇÃO	CÓDIGO
2	DECORAÇÃO PROTEÇÃO DA GAVETA BSI-9000	704031
3	PROTEÇÃO DA GAVETA BSI-9000	702661
4	KNOB MICROFONE/VOLUME	702662
5	DECORAÇÃO BOTÃO VOLUME BSI-9000	704029
6	VISOR GABINETE FRONTAL BSI-9000	704030
8	GABINETE FRONTAL BSI-9000	702663
9	BOTÕES DVD	702664
10	BOTÃO VOLUME	702665
11	PCI DISPLAY/TECLADO	702652
14	GABINETE INFERIOR	702666
15	GABINETE TRASEIRO	702667
18	BOTÃO CHAVE MASTER	702668
19	CHAVE MASTER KDC-04	701666
22	PCI CONTROLE MICROFONE	702655
23	PCI KARAOKÊ	702653
29	BASE FIXAÇÃO TRANSFORMADOR	702671
30	TRANSFORMADOR TOROIDAL 127/220V	702657
31	DISCO FIXAÇÃO TRANSFORMADOR	702672
35	PCI VÍDEO COMPONENTE	702654
36	MECANISMO DVD SEM U. ÓTICA KHM280AA BSI-9000 v.A	701745
	MECANISMO DVD SEM U. ÓTICA HT 343/DV34 BSI-9000 v.B	702792
38	GABINETE SUPERIOR	702674
39	CORDÃO ELETRICO DVD PADRÃO	701613
41	COOLER 12V/0.08A	702659
43	DISSIPADOR DE CALOR	702658
44	PCI PRINCIPAL DH803P-ODE	702650
	PCI PRINCIPAL 001DH 803 DDF MT 1389	702727
45	MÓDULO RÁDIO AM/FM COMPLETO	702656
46	PCI POTÊNCIA HTR901P-ON8	702651
47	UNIDADE ÓTICA KHM2800AAA BSI-9000 v.A	701756
	UNIDADE ÓTICA DVD HT 343/34 BSI-9000 v.B	702736
	AMORTECEDOR CINZA v.A	701671
48	AMORTECEDOR AMARELO v.A	701672
	AMORTECEDOR VERDE v.B	703260
C1	CONJUNTO M-6 PARAFUSO/ARRUELA/PORCA	702670

NOTA:
Dos itens da página anterior, somente aqueles que possuem
códigos relacionados nas tabelas serão fornecidos.

DEMAIS COMPONENTES FORNECIDOS

DESCRIÇÃO	CÓDIGO	LOCALIZAÇÃO
ALTO-FALANTE 6R/25W BLINDADO	702684	
ALTO-FALANTE WOOFER 4R/40W	702685	
ANTENA AM	702699	
ANTENA FM	702700	
BARRA CONTATOS SAÍDA CX. ACUST.	702708	
CABO FLAT 13 VIAS 9cm x 1,2cm (RÁDIO)	702678	
CABO FLAT 24 VIAS 20cm x 1,3cm INVERTIDO v.A	702729	
CABO FLAT 26 VIAS 24cm x 1,3cm INVERTIDO v.B	702639	
CABO POL. 22AWG PRETO VERM 2,4M BSI-9000	702695	
CABO POL. 22AWG PRETO/AZUL 2,4M BSI-9000	702696	
CABO POL. 22AWG PRETO/CINZA 5,75M BSI-9000	702698	
CABO POL. 22AWG PRETO/VERD 2,75M BSI-9000	702697	
CAPACITOR ELET. 6800UF/25V	702707	c905,906
CHICOTE 3VIAS x 20CM (COAXIAL) BSI-9000	702737	
CHICOTE 4VIAS x 45CM (COAXIAL/MISTO) BSI-9000	702738	
CHICOTE 6VIAS x 20CM DVD-3600/PLUS/GAME/HOME/KSS213	703261	
CHICOTE 6VIAS x 7CM BSI-9000/KSS213	703266	
CHICOTE 8VIAS x 18CM BSI-9000	702801	
CHICOTE 8VIAS x 20CM BSI-9000	702739	
CHICOTE DUPLO 4 VIAS X16 CM X 30 CM	702734	

(continua na próxima página)

DEMAIS COMPONENTES FORNECIDOS (continuação)

DESCRIÇÃO	CÓDIGO	LOCALIZAÇÃO
CI 4580	702726	U1
CI 74HC4052	702723	U3
CI AM5868/ BA 5954FP	701640	U18
CI G960T63U	701634	U1,U2
CI H7812	702721	IC901
CI HCU 04	701400	U3
CI HCU 04	701400	U2
CI HT24LCO2	701643	U10
CI HT24LCO2	701643	MU2
CI HT8970	702725	U2
CI KA7912/H7912	702717	IC11
CI KIA7805/L7805	702716	IC5,15,16
CI LA1824(RADIO)	701101	
CI LC72131(RADIO)	702714	
CI MEMORIA ESMT M12L16161A	702712	U6,U7
CI MEMORIA MX 26LV800	701644	U9
CI MT1336	701635	U17
CI MT1379E	702508	U4
CI P9428XZZ-SAMSUNG	702722	MU1
CI PT2322-S	702718	IC12
CI PT2323-S	702715	IC1
CI PT6311(DISPLAY)	702724	
CI RC4558	701907	U14,15,16
CI RC4558	701907	IC2,3,4,IC405,406,407
CI TDA7265	702720	IC503
CI TDA7269A	702719	IC501,502
CI WM8746	702713	U12
CONEC. CX. ACUST. PRETO/AZUL	702688	
CONEC. CX. ACUST. PRETO/CINZA	702686	
CONEC. CX. ACUST. PRETO/VERMELHO	702687	
CONTROLE REMOTO	702676	
CRISTAL 4MHZ	702704	X1
CX. ACUST. COMPLETA CENTRAL	702682	
CX. ACUST. COMPLETA FRONTAL	702680	
CX. ACUST. COMPLETA TRASEIRA	702681	
CX. ACUST. COMPLETA WOOFER	702683	
DIODO IN5402	702705	
DISCO ISOLAÇÃO TRANSFORMADOR	702673	
DISPLAY	702677	
EMBALAGEM BSI-9000	702701	
GAB. CX. ACUST. SUPER WOOFER	702693	
GAB. FRONTAL CX. CENTRAL	702690	
GAB. FRONTAL CX. SATELITE	702689	
GAB. TRASEIRO CX. CENTRAL	702692	
GAB. TRASEIRO CX. SATELITE	702691	
JACK 6,3MM MICROFONE	702709	
MANUAL DO USUÁRIO BSI-9000	702702	
PONTE RETIFICADORA KBU 806G	702706	D7
RESISTOR 2,5R/5W (CX. ACUST.)	702710	
RESISTOR 4,7R/1W	702711	R516,517,518,519,520,521
TELA DO WOOFER	702694	
TRANSISTOR TIP 42C	702703	Q904

NOTA:

Dos itens da página 2, somente aqueles que possuem códigos relacionados nas tabelas serão fornecidos.

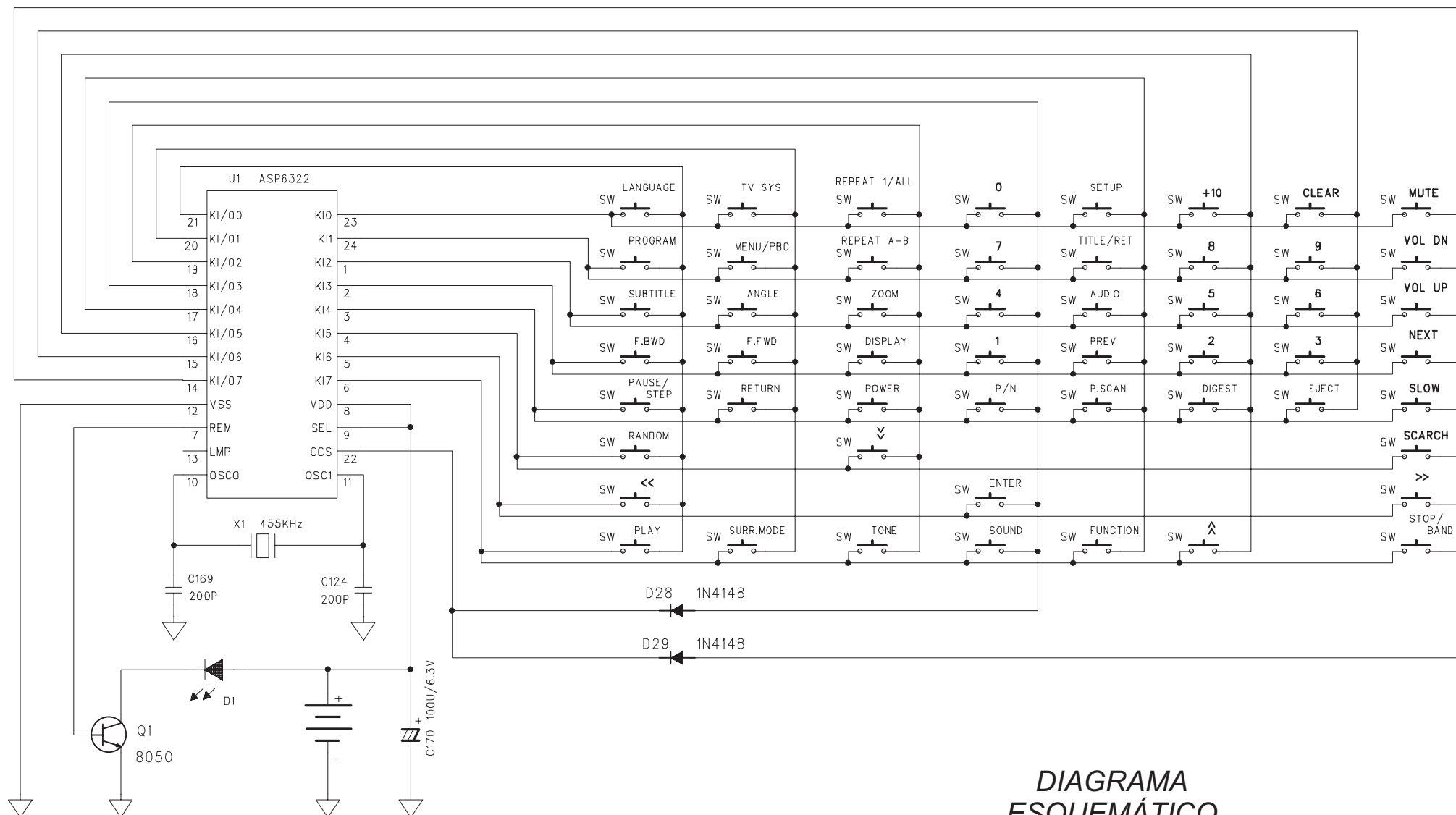
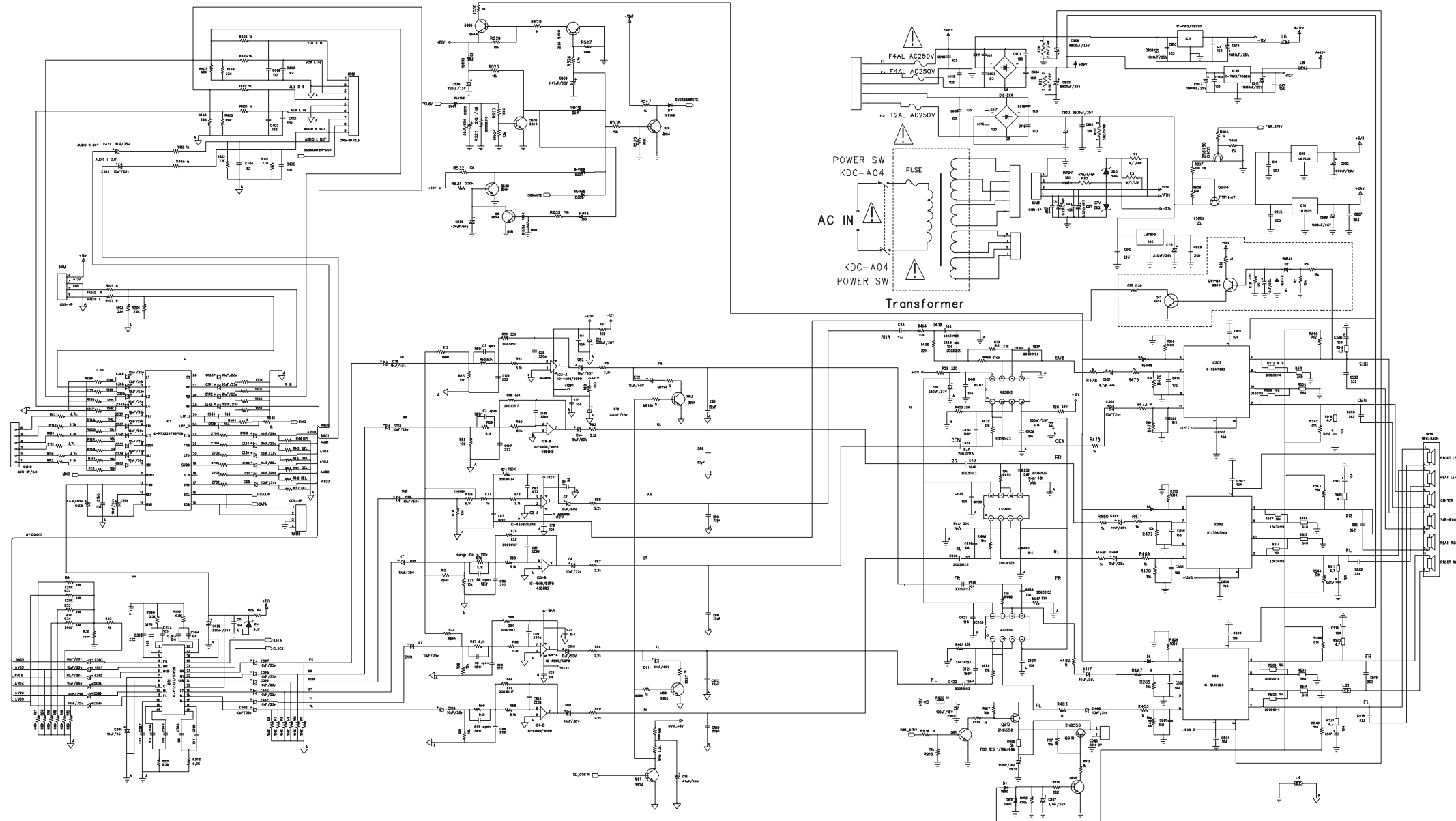
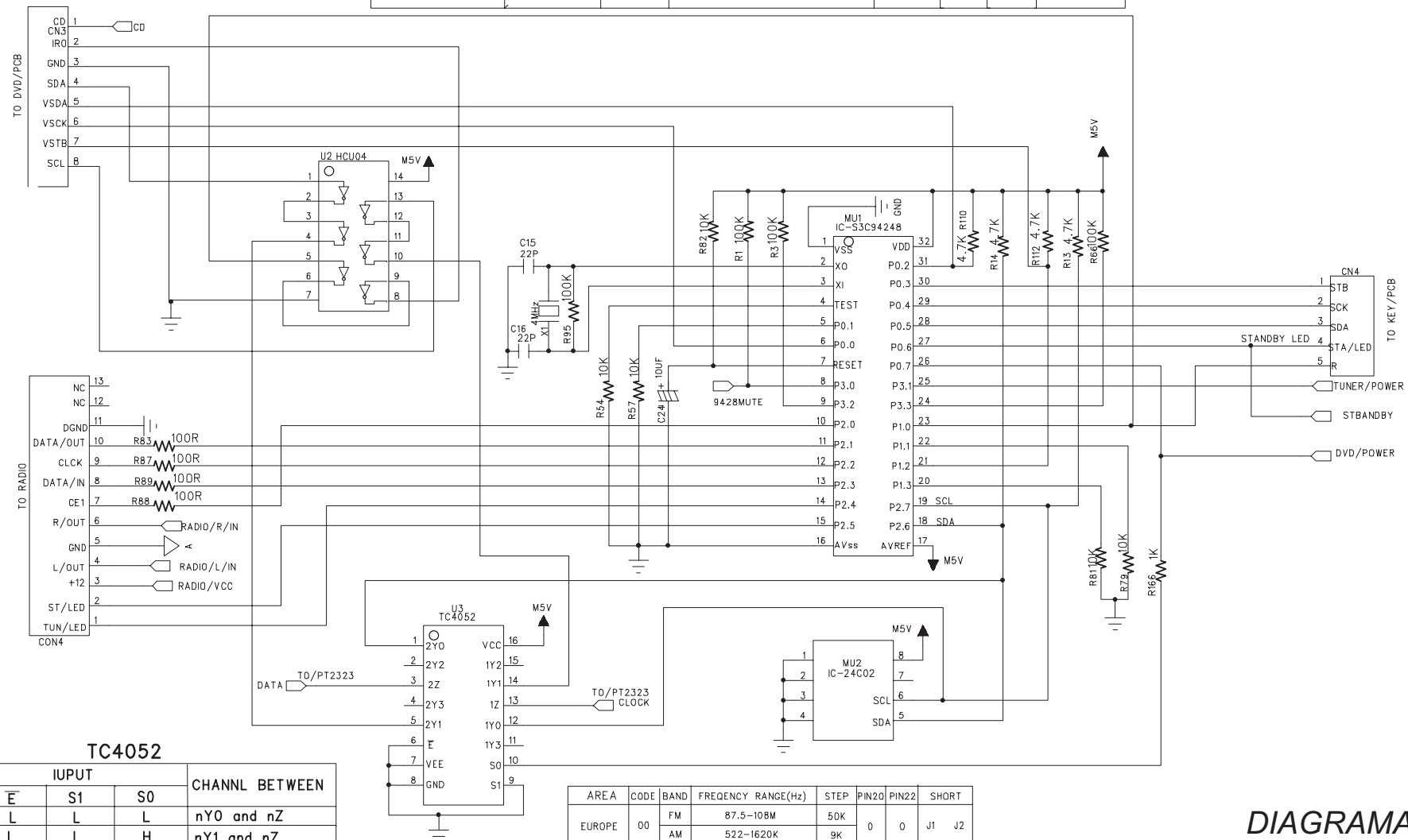


DIAGRAMA
ESQUEMÁTICO
CONTROLE REMOTO

DIAGRAMA
ESQUEMÁTICO
FONTE + PCI POTÊNCIA

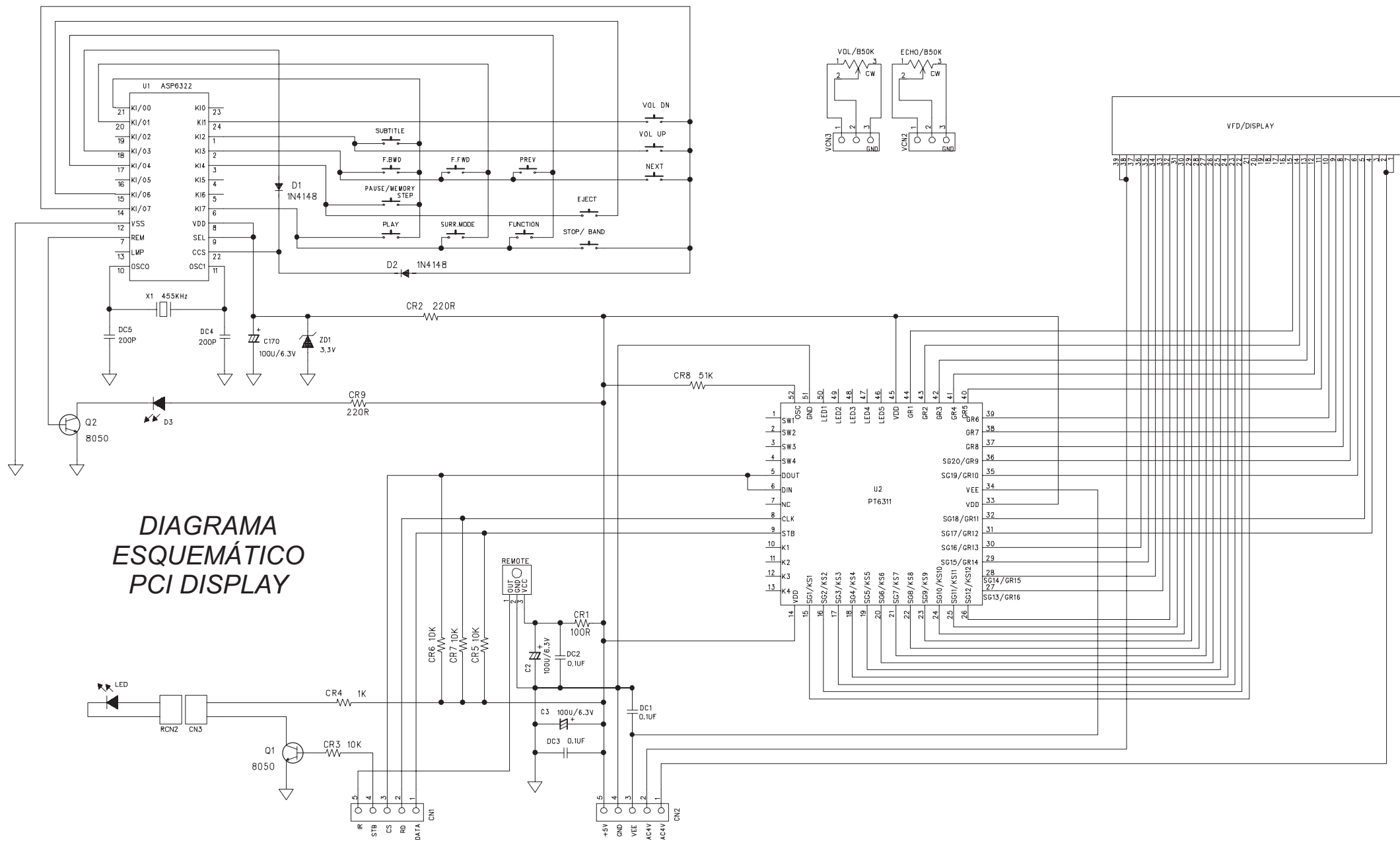


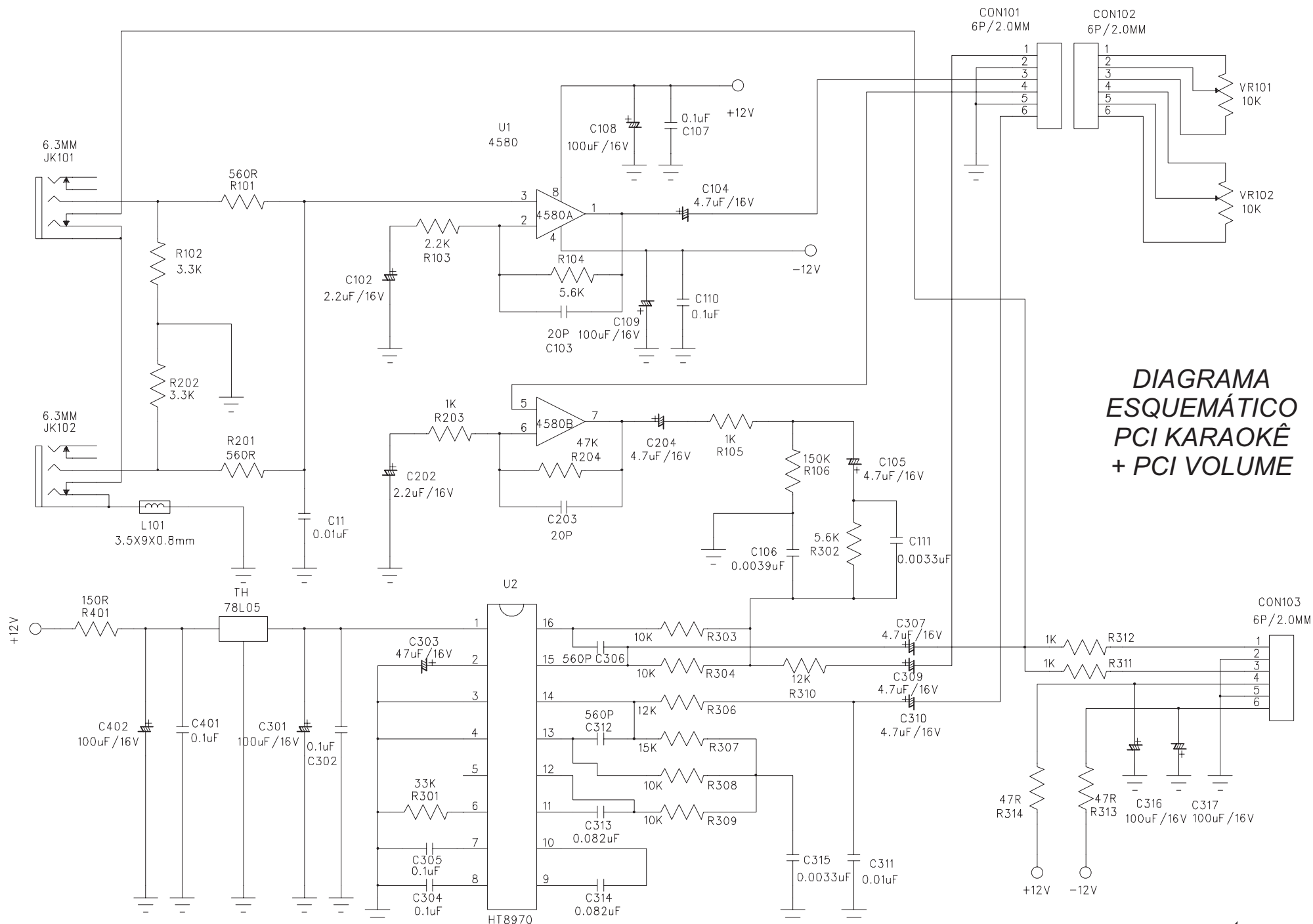
AREA	CODE	BAND	FREQUENCY RANGE(HZ)	STEP	PIN20	PIN22	SHORT
JAPEN	00	FM	76-108M	100K	0	0	J1 J2
		AM	522-1629K	9K	0	0	J1 J2



AREA	CODE	BAND	FREQUENCY RANGE(Hz)	STEP	PIN20	PIN22	SHORT
EUROPE	00	FM	87.5-108M	50K	0	0	J1 J2
		AM	522-1620K	9K	0	0	J1 J2
U.S.A	01	FM	87.5-108M	100K	0	1	J1 J4
		AM	520-1710K	10K	0	1	J1 J4
LATIN AMERICA	10	FM	87.5-108M	100K	1	0	J3 J2
		AM	520-1620K	5K	1	0	J3 J2
AUSTRLIA& MIDDLEEAST	11	FM	87.5-108M	100K	1	1	J3 J4
		AM	531-1602K	9K	1	1	J3 J4

DIAGRAMA
ESQUEMÁTICO
PCI POTÊNCIA





**DIAGRAMA
ESQUEMÁTICO
PCI KARAOKÊ
+ PCI VOLUME**

DIAGRAMAS

HOME THEATER

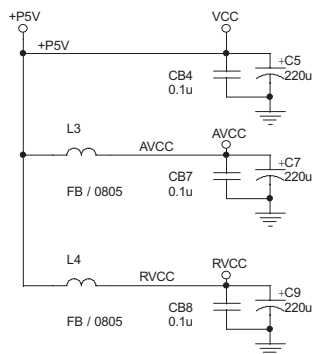
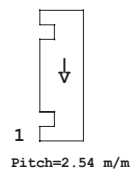
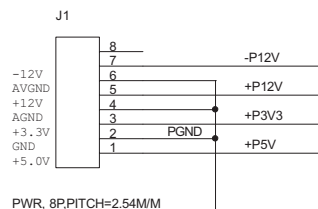
BSI-9000

versão A

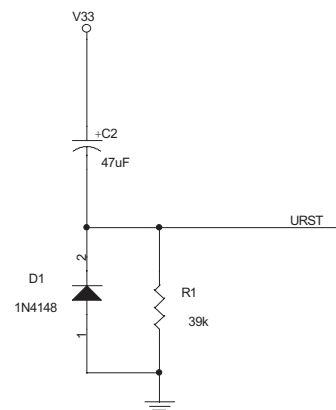
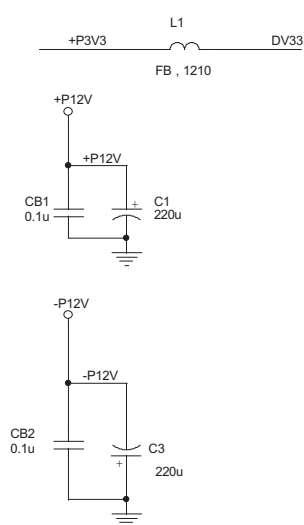
COMMON79_KHM280_V1

- 1 INDEX & POWER, RESET
- 2 RF / SERVO & MPEG - MT1336E / MT1379E
- 3 MEMORY - SDRAM, FLASH/EEPROM
- 4 AUDIO - WM8720&WM8746
- 5 AV FILTER.

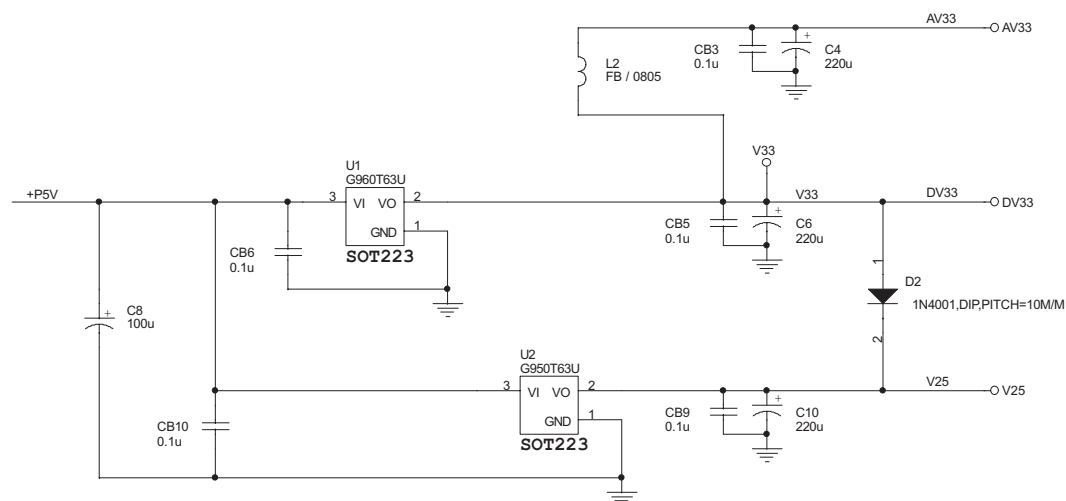
NAME	TYPE
GND	Digital Ground
SGND	Servo Analog Ground
AGND	Audio Ground
VGND	Video Ground



**ESTÁGIO
ALIMENTAÇÃO
PCI PRINCIPAL**



URST → URST [2,3]
PWR_STBY → PWR_STBY [2]

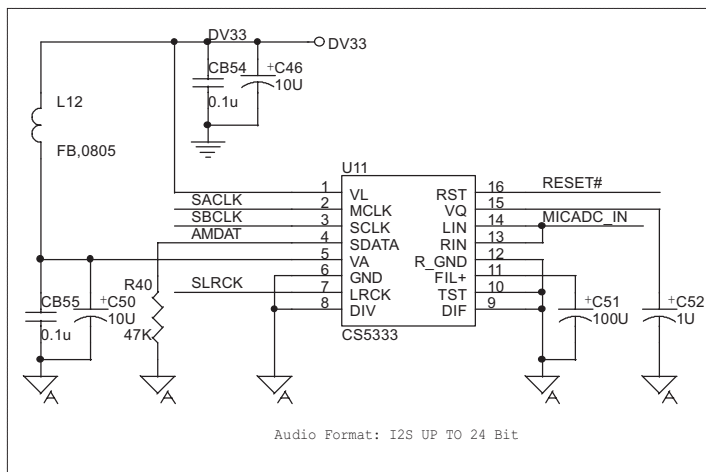


NAME	TYPE	DEVICE
VCC	Digital 5V	SUPPLY
RVCC	Servo 5V	MT1336E
AVCC	RF 5V	PICKUP HEADER
V33	Digital 3.3V	SDRAM, Flash, VideoDAC
DV33	Digital 3.3V	MT1379E
AV33	Servo 3.3V	MT1379E
V25	Digital 2.5V	MT1379E
+5VA	Audio 5V	Audio DAC
+3VV	Video 3.3V	Video DAC
+5VV	Video 5V	Video DAC
+12V	Audio 12V	Audio filter



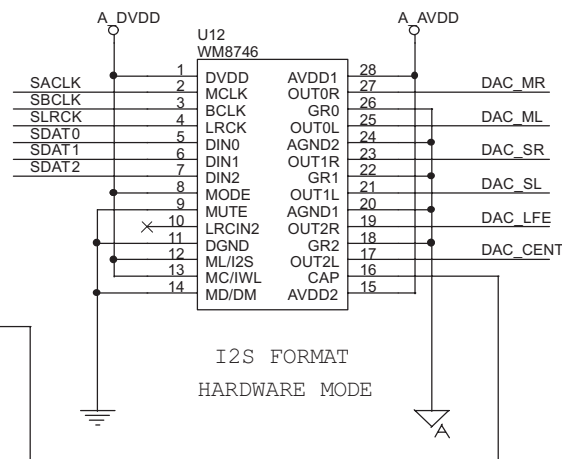
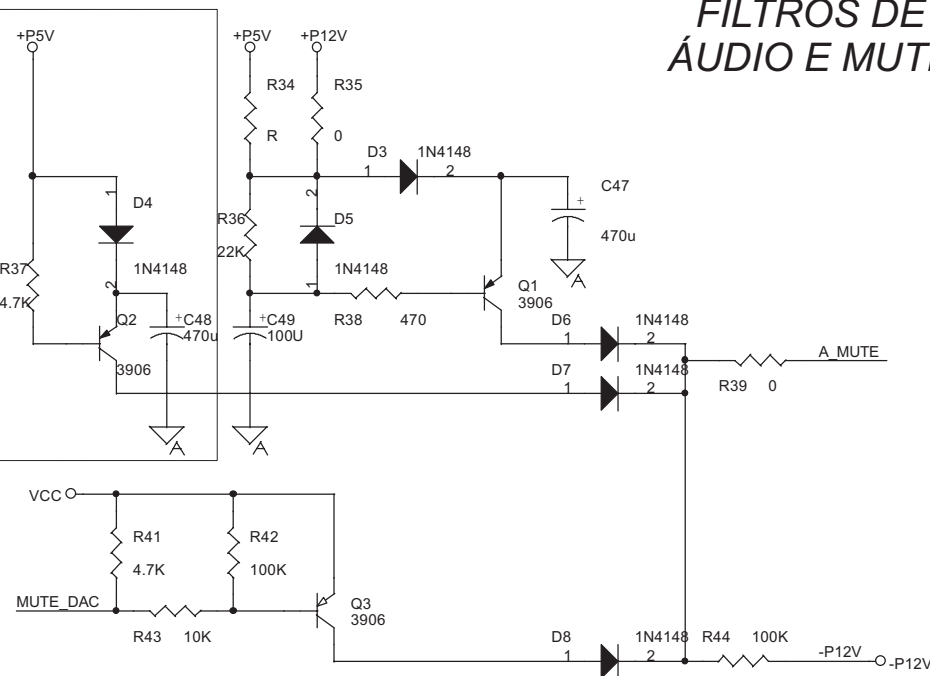
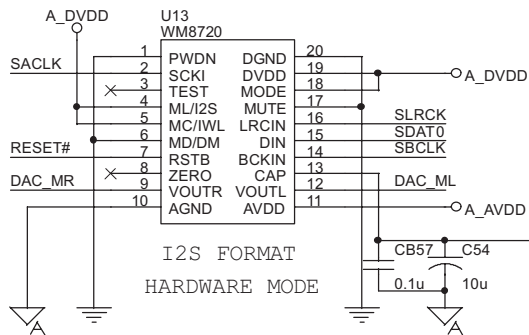
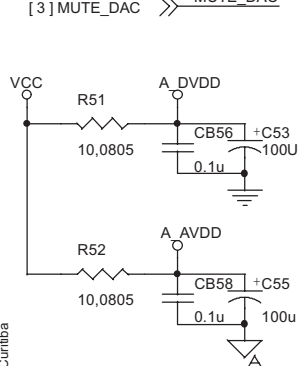
CHIP SET MT1379

Saalfeld & Freitas / Curitiba



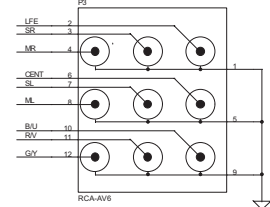
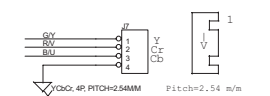
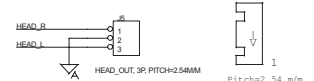
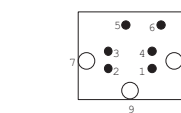
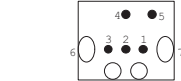
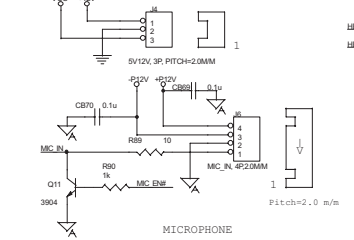
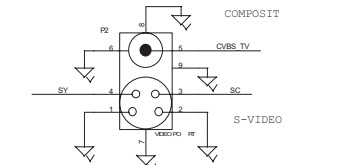
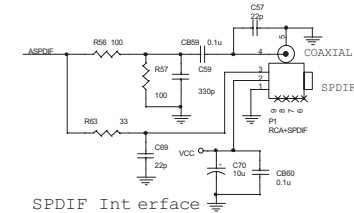
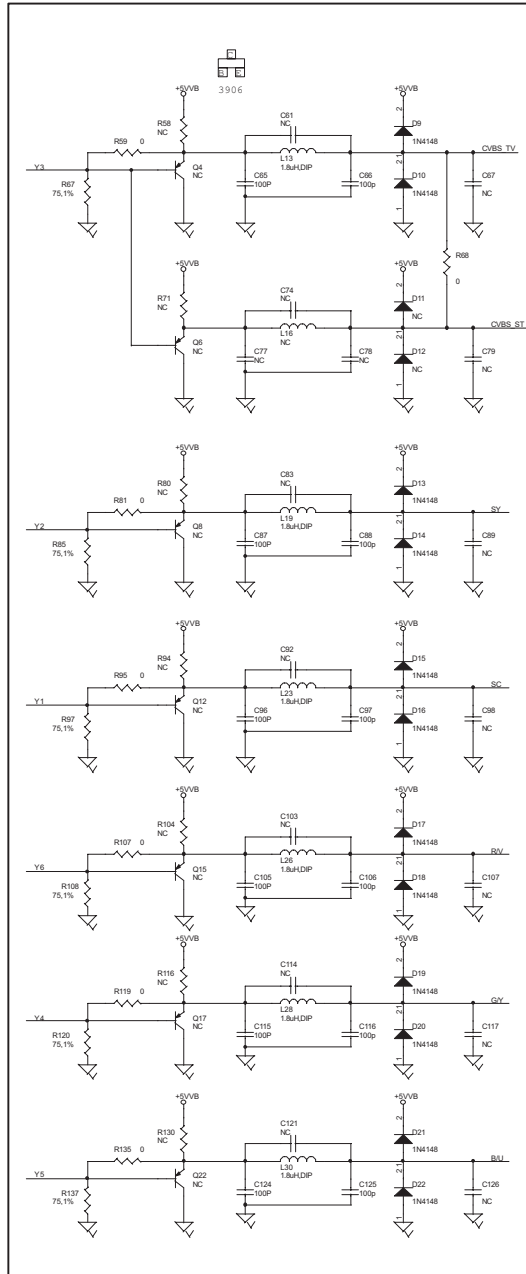
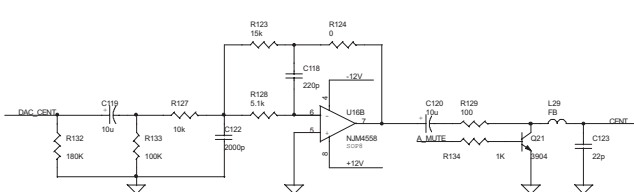
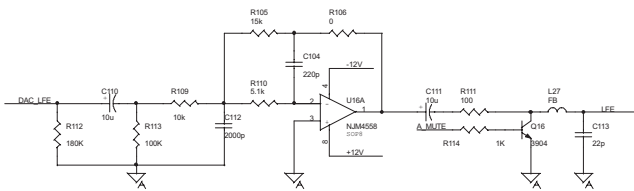
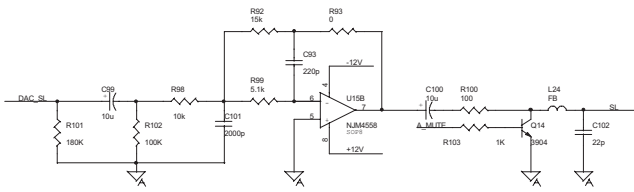
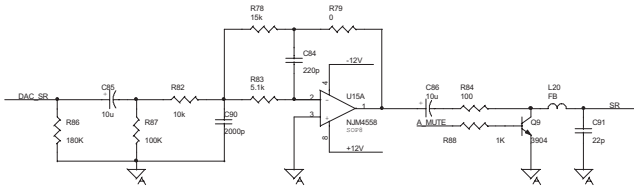
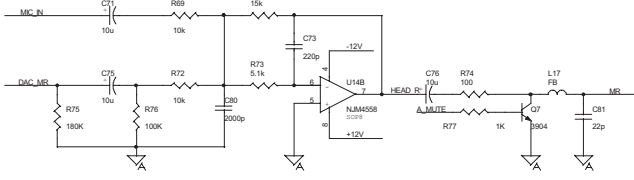
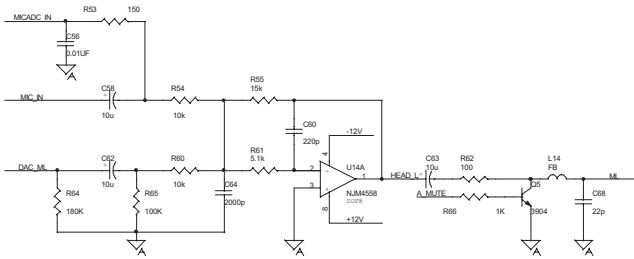
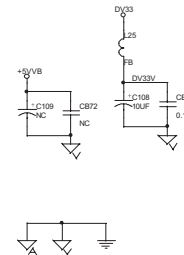
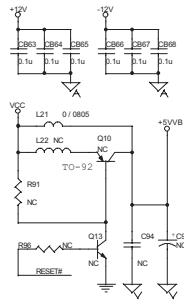
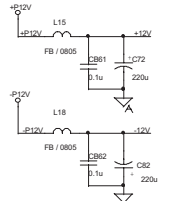
[3] ACLK >>> ACLK
 [3] ABCK >>> ABCK
 [3] ALRCK >>> ALRCK
 [3] ASDAT[0..2] >>> ASDAT[0..2]
 [6] MICADC_IN >>> MICADC_IN
 [3,6] RESET# >>> RESET#
 [3] MUTE_DAC >>> MUTE_DAC

ACLK R45 >>> 33 SACLK
 ALRCK R46 >>> 33 SLRCK
 ABCK R47 >>> 33 SBCLK
 ASDAT0 R48 >>> 33 SDAT0
 ASDAT1 R49 >>> 33 SDAT1
 ASDAT2 R50 >>> 33 SDAT2



DAC_MR >>> DAC_MR[6]
 DAC_ML >>> DAC_ML[6]
 DAC_SR >>> DAC_SR[6]
 DAC_SL >>> DAC_SL[6]
 DAC_CENT >>> DAC_CENT[6]
 DAC_LFE >>> DAC_LFE[6]
 AMDAT >>> AMDAT[3]
 A_MUTE >>> A_MUTE[6]

- [5] DAC_MR >> DAC_MR
- [5] DAC_ML >> DAC_ML
- [5] DAC_SR >> DAC_SR
- [5] DAC_SL >> DAC_SL
- [5] DAC_CENT >> DAC_CENT
- [5] DAC_LFE >> DAC_LFE
- [3] ASPDIF >> ASPDIF
- [3] MIC_ENH >> MIC_ENH
- [5] MCADC_IN >> MCADC_IN
- [5] A_MUTE >> A_MUTE
- [3] RESET9 >> RESET9
- [3] Y10_7 >> Y10_7



BUFFER SINAL DE VÍDEO

DIAGRAMAS

HOME THEATER

BSI-9000

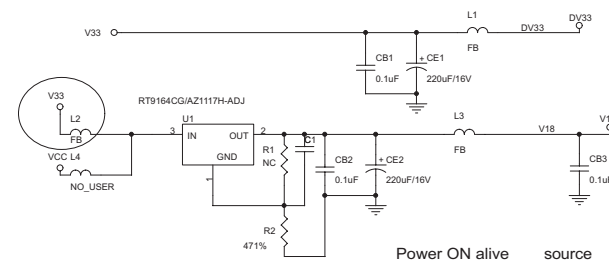
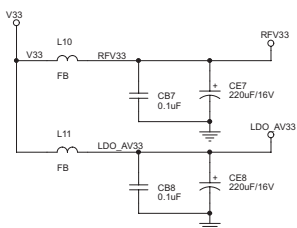
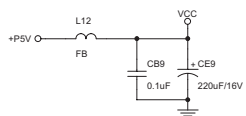
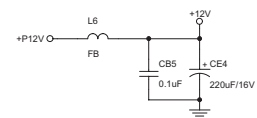
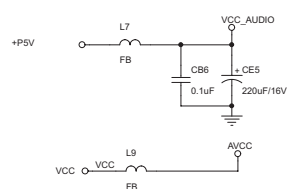
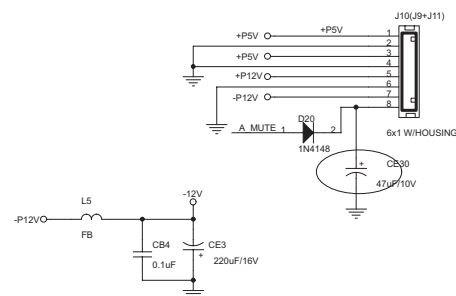
versão B

MT1389D (LQFP216) DVD for SANYO DV34

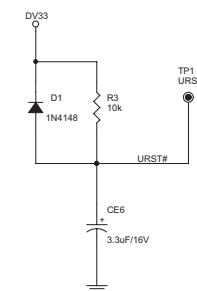
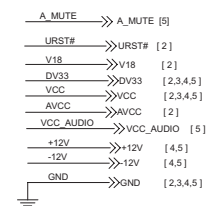
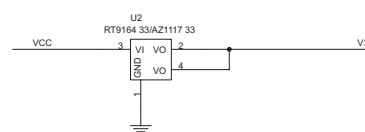
- 1 INDEX & POWER, RESET
- 2 RF, SERVO & MPEG - MT1389E
- 3 MEMORY - SDRAM, FLASH/EEPROM
- 4 VIDEO OUT
- 5 AUDIO DAC WMA8766

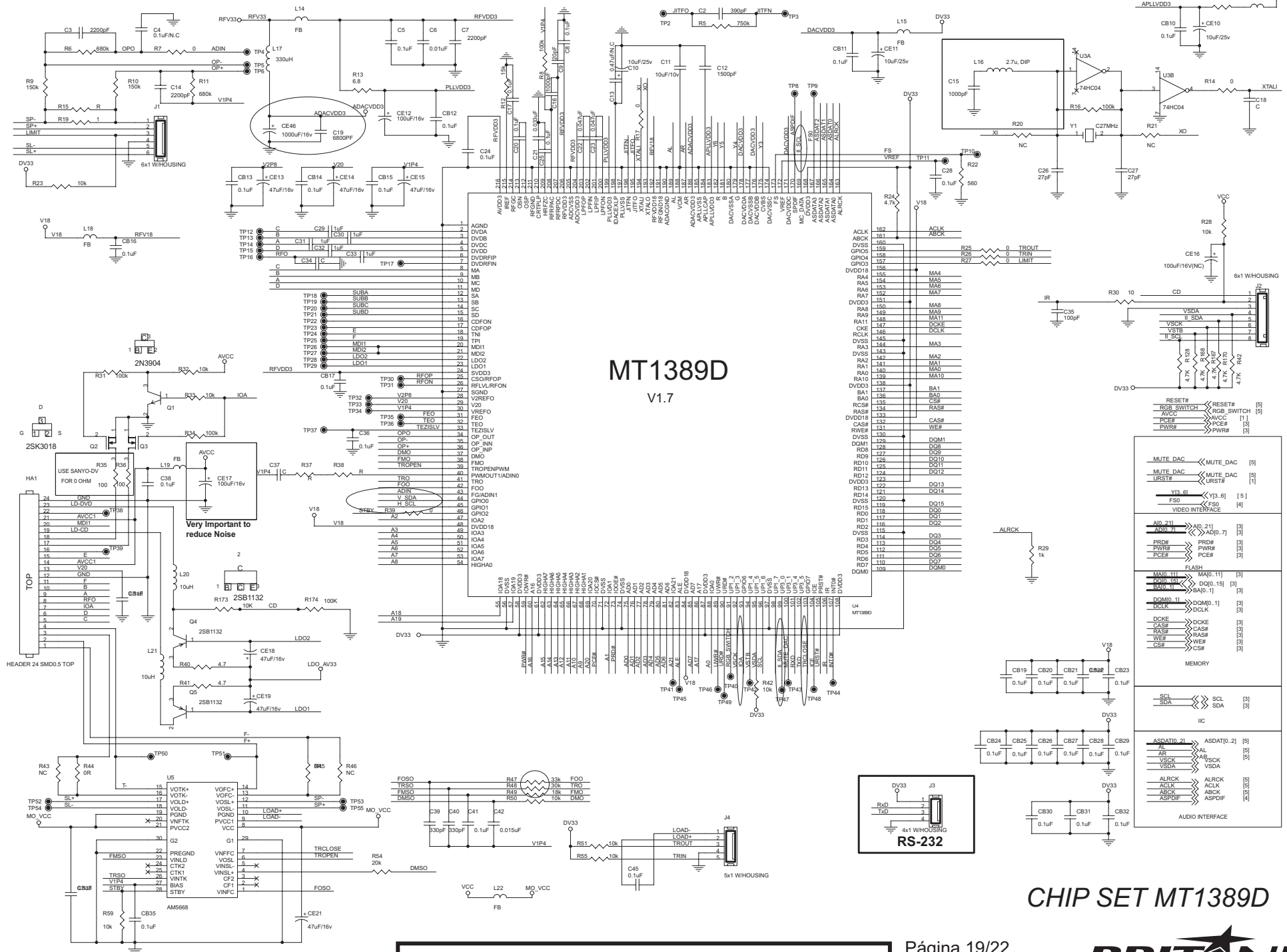
NAME	TYPE	DEVICE
VCC	Digital 5V	SUPPLY
DV33	Digital 3.3V	MT1389E
RFV33	Servo 3.3V	MT1389E
LDO_AV33	Laser Diode 3.3V	
AVCC	RF 5V	PICKUP HEADER
V18	Digital 1.8V	MT1389E
SD33	Digital 3.3V	SDRAM
+12V	Audio +12V	OP AMP.
-12V	Audio -12V	OP AMP.
AVDD	Audio 5V	Audio DAC
DVDD	Audio 3V3	Audio DAC

ESTÁGIO ALIMENTAÇÃO PCI PRINCIPAL

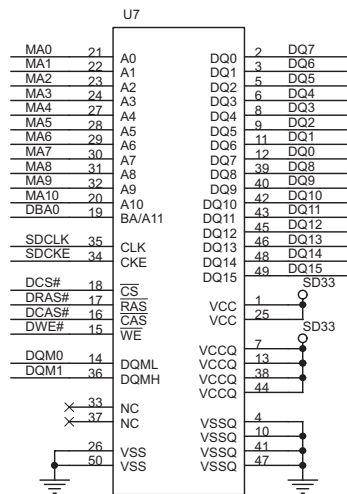


Regulator	R1	R2
Fix regulator	0 ohm	OFF
Adj regulator	300 1%	680 1%

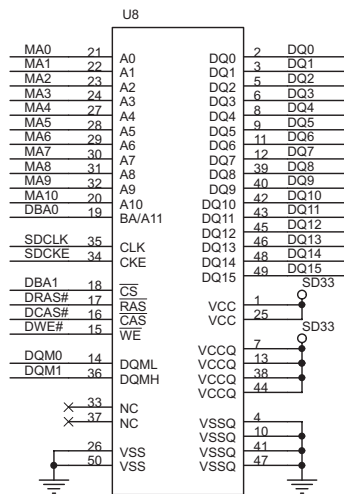




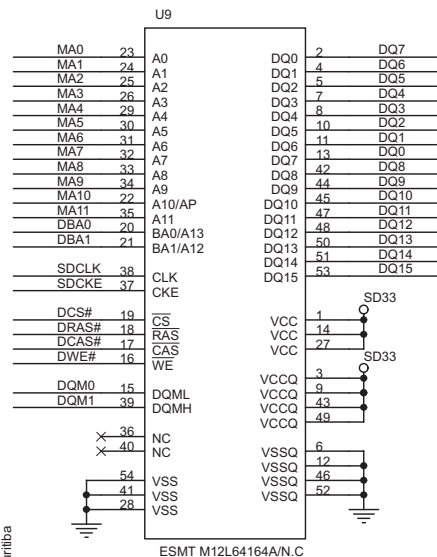
CHIP SET MT1389D



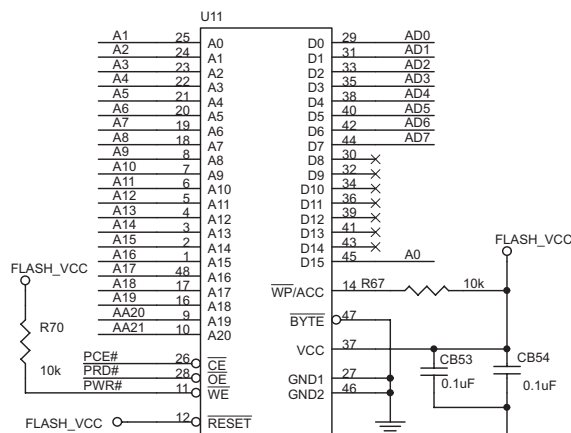
ESMT M12L16161A-7



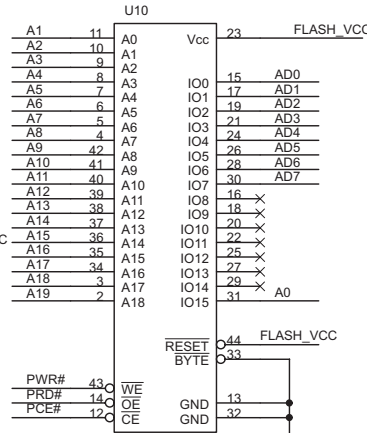
ESMT M12L16161A-7



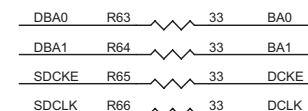
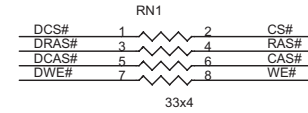
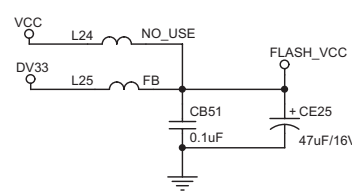
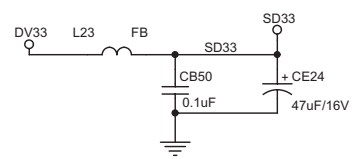
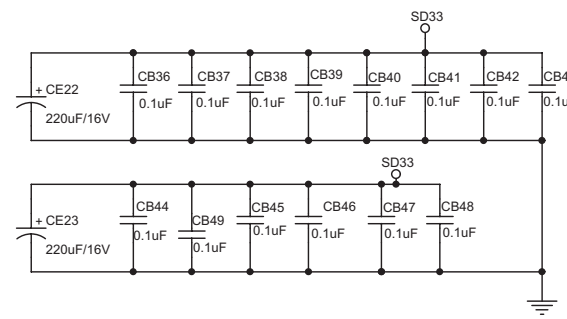
ESMT M12L64164A/N.C



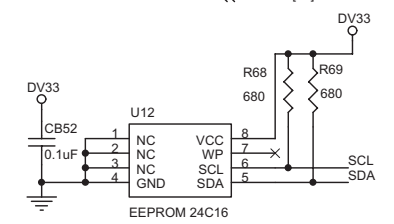
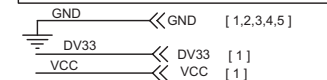
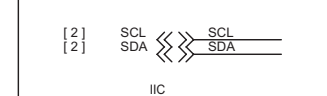
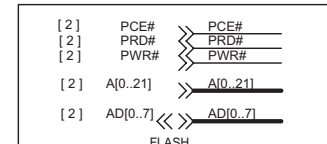
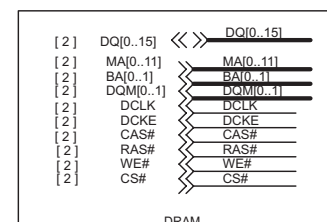
STM29W160/MX29LV800(160)
TSOP 48 pin
8M 16M 32M FLASH

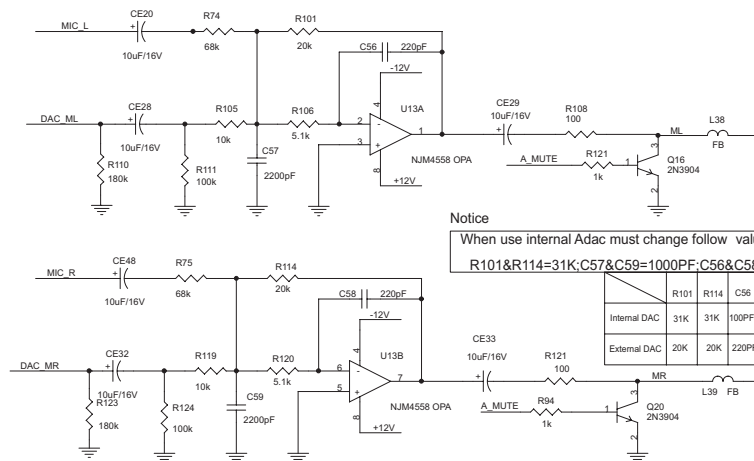
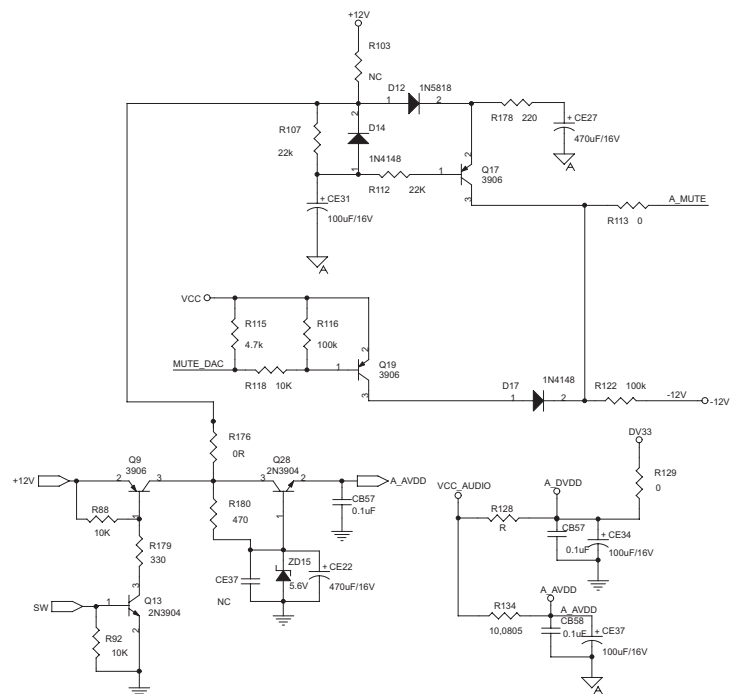


AT49F8192A, SOP
8M Flash



MEMÓRIAS FLASH E SDRAM





Notice

When use internal Adac must change follow value

R101&R114=31K;C57&C59=1000PF;C56&C58=100PF

	R101	R114	C56	C57	C58	C59
Internal DAC	31K	31K	100PF	1000PF	1000PF	1000PF
External DAC	20K	20K	220PF	2200PF	2200PF	2200PF

G/Y B/U
RV RV

[4]
[4]
[4]

[1] A_MUTE >> A_MUTE

[4] CVBS >> CVBS

[4] CVBS1 >> CVBS1

[1] -12V >> -12V

[1] +12V >> +12V

[1] DV33 >> DV33

[1] VCC >> VCC

[1] VCC_AUDIO >> VCC_AUDIO

[1,2,3,5] GND >> GND

[2] AL >> AL

[2] AR >> AR

[2] ASDIF >> ASDIF

[2] ASDAT0-2 >> ASDAT0-2

[2] ACLK >> ACLK

[2] ABCK >> ABCK

[2] ALRCK >> ALRCK

[2] MUTE_DAC >> MUTE_DAC

[4] ML >> ML

[4] MR >> MR

ACLK R125 >> 33 SACLK

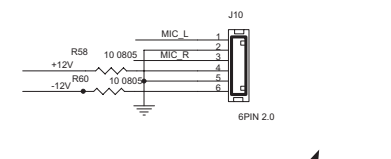
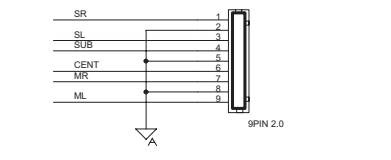
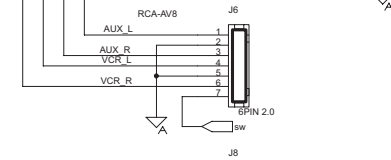
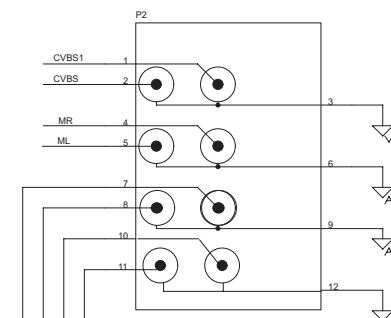
ALRCK R126 >> 33 SLRCK

ABCK R127 >> 33 SBCLK

ASDAT0 R131 >> 33 SDAT0

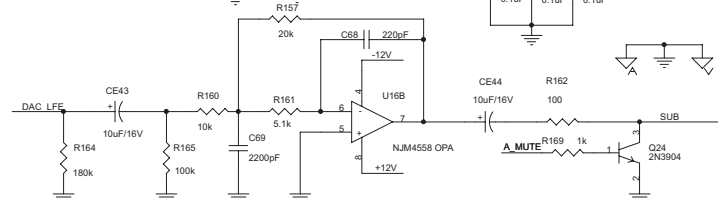
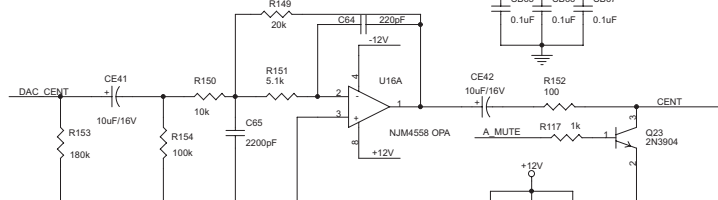
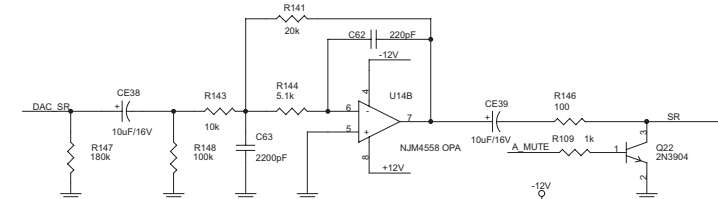
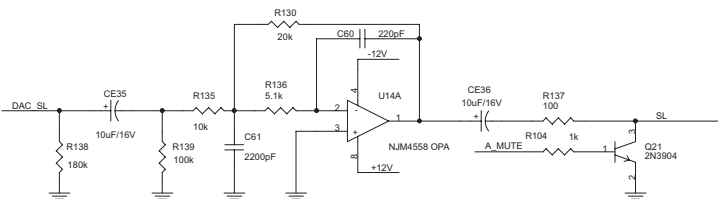
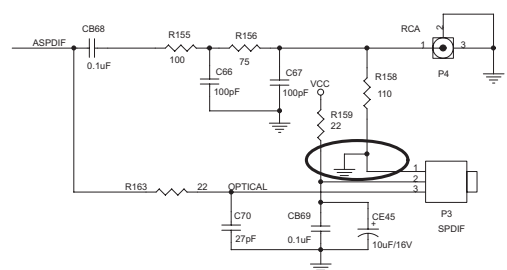
ASDAT1 R132 >> 33 SDAT1

ASDAT2 R133 >> 33 SDAT2



FILTROS DE
ÁUDIO E MUTE

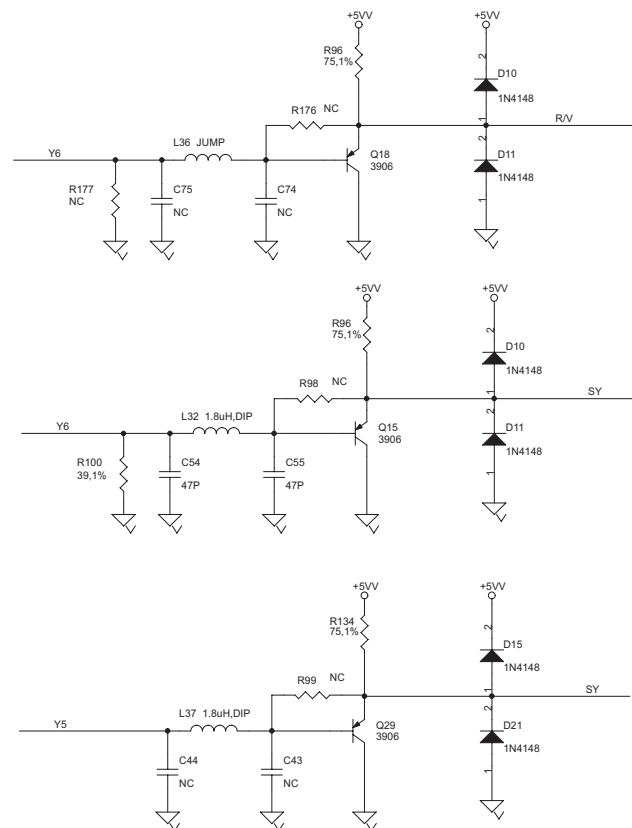
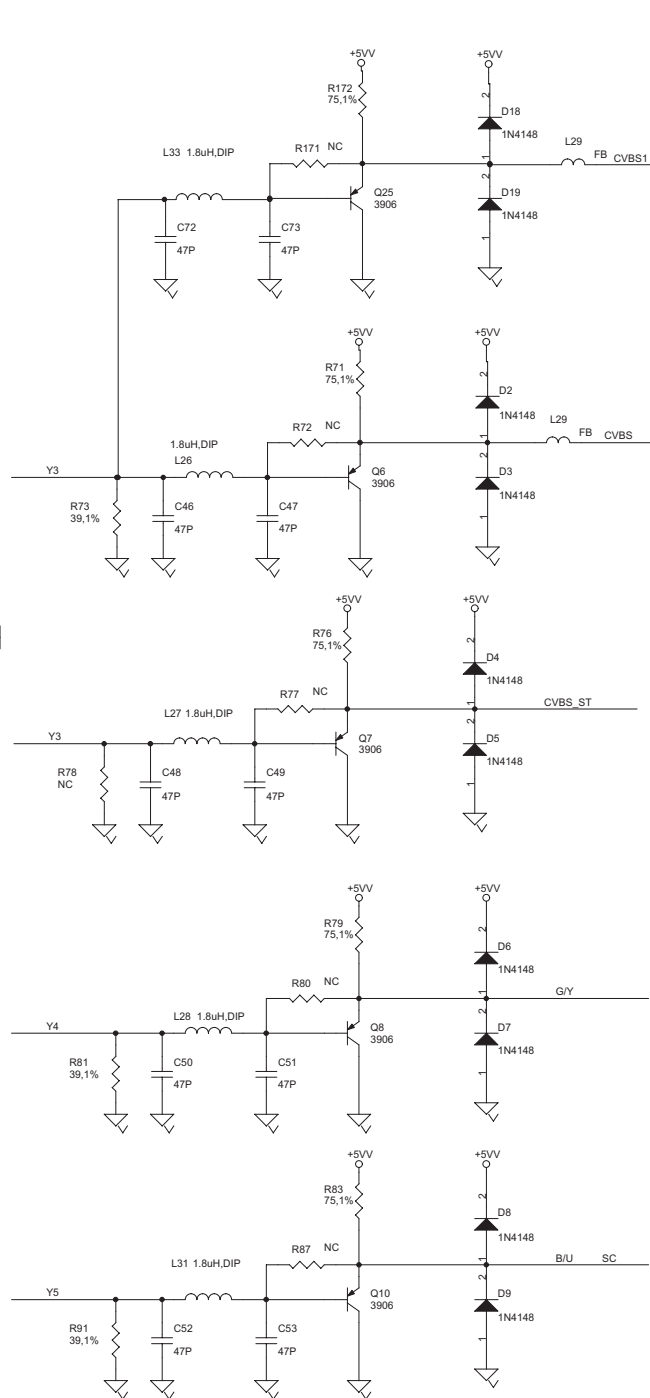
HARDWARE: IIS 24BIT



HOME THEATER BSI-9000 v.B

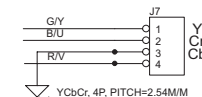
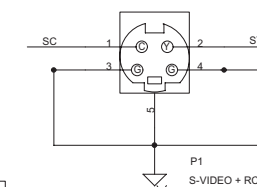
Página 21/22

BRITANIA
ASSISTÊNCIA TÉCNICA



CVBS	<< CVBS	[5]
CVBS1	<< CVBS1	[5]
RESET#	<< RESET#	[2]

MUTE_DAC	<< MUTE_DAC	[5]
Y3..6	<< Y3..6	[2]
AL	<< AL	[2]
AR	<< AR	[2]
ML	<< ML	[5]
MR	<< MR	[5]
GY	<< GY	[5]
BU	<< BU	[5]
R/V	<< R/V	[5]
FS0	<< FS0	[2]
A21	<< A21	[2]
ASDAT0	<< ASDAT0	[2]
RGB_SWITCH	<< RGB_SWITCH	[2]
GND	<< GND	[1]
VCC	<< VCC	[1]
+12V	<< +12V	[1]
-12V	<< -12V	[1]



BUFFER SINAL DE VÍDEO

